

Stephanie Tubbs Jones

SOCIAL JUSTICE FORUM



INVESTING IN *Black Women* The Smartest Return America Can Make

Delta Days in the Nation's Capital | Monday, March 23, 2026 | 8:00 am



Program

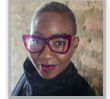
Call to Order and Introduction of Moderator **Antoinette M. Rogers, Ph.D.**
DREF Director of Programs



Welcome and Purpose of Forum **Dr. Julianne Malveaux**
*President Emerita, Bennett College for Women
Economist, Author, Commentator*



Greetings..... **Tchicaya Robertson, Ph.D.**
Chair, DREF Sister Scholars Advisory Council



Renee Harper
President, DREF Board of Directors



Cheryl W. Turner
*International President, Chair, Board of Directors
Delta Sigma Theta Sorority, Inc.*



Greetings & Reflections **Omaima Lado**
*2025 Stephanie Tubbs Jones Intern
Senior, University of Nebraska-Lincoln, Omicron Chapter*



Presentation to STJ Family **Dr. Julianne Malveaux**
*President Emerita, Bennett College for Women
Economist, Author, Commentator*

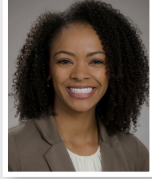
Introduction of Panel **Dr. Julianne Malveaux**
*President Emerita, Bennett College for Women
Economist, Author, Commentator*

Please make sure to visit DREF online at

www.deltafoundation.net



PANELISTS



Jevay Grooms, PhD.

*Assistant Professor
Department of Economics
Howard University
Director, Center for Race and Wealth*



Dr. Keonda Grant-Taylor

*Founder & CEO
Gullahnomics*



Tanya Wallace-Gobern

*Executive Director
National Black Workers Center Project*

MODERATOR



Dr. Julianne Malveaux

*President Emerita,
Bennett College for Women
Economist, Author, Commentator*

Question & Answer Period/Town Hall Panelists & Moderator

**Announcement of Inaugural Sadie Tanner
Mossell Alexander Vanguard Award Dr. Kia Monique Jones**
Co-chair of STJ Forum



Dr. Marlena Brown
Co-chair of STJ Forum



Introduction of 2026 STJ Commissioned Artist Renee Harper
President, DREF Board of Directors

Antoinette M. Rogers, Ph.D.
DREF Director of Programs

Unveiling of 2026 Artwork Yemonja Smalls, Ph.D.
Artist



Closing and Announcements Antoinette M. Rogers, Ph.D.
DREF Director of Programs

Please make sure to visit DREF online at

www.deltafoundation.net