

ALIGNING  
*Advocacy  
& Action*  
Creating Possibilities  
Improving Lives

ANNUAL  
REPORT 2023  
2024



70 YEARS SINCE  
BROWN V. BOARD  
*Triumphs and  
Challenges*



# VISION

---

The DREF vision is to create possibilities and improve lives.

# MISSION

---

The Delta Research and Educational Foundation (DREF) identifies issues affecting Black women, their families, and communities of the African Diaspora globally, and creates solutions through research, programming, and funding in support of charitable and educational programs of Delta Sigma Theta Sorority, Inc. and other collaborative organizations.

## DREF Board of Directors

---

### Officers

Renee L. Harper, *President*  
Tina Fernandez, *Vice President*  
Angela Williams, *Secretary*  
Jada Grandy-Mock, *Treasurer*  
Nigel W. Long, Esq. *Parliamentarian*

### Members

Elsie Cooke-Holmes  
*International President & Chair,  
National Board of Directors, Delta  
Sigma Theta Sorority, Inc.*  
Dr. Patricia Benson  
Doris Gray Brown

Lori Jones Gibbs  
Teresa Harman, CPA  
Steven V. Hunter, Esq.  
Nicole Lindsay  
Gwendolyn Mason  
Vonetta C. Mickens  
Kristan M. Murray  
Fredric A. Navarre  
Stephanie Nellons Paige  
Sandra Phillips Johnson  
Dr. Joan Prince  
Sade Reid  
Pamela E. Smith  
Karen Stanley

Cristel Turner  
Annie P. Whatley  
Soraya Williams Farver  
Deadra Woods Stokes, Esq.

### Ex- Officio Members

Karla M. Green  
*DREF Executive Director*  
Dorcas Washington  
*Executive Director  
Delta Sigma Theta Sorority, Inc.*  
Dr. Tchicaya Robertson,  
*Chair, Sister Scholars  
Advisory Council*

## DREF Staff and Consultants

---

Karla M. Green, *Executive Director*  
Antoinette M. Rogers, Ph.D.,  
*Director of Programs*  
Imani Drew, *Office Manager*  
Rosali Quinones, Sr. *Accountant*  
LaShawn Cook, *Donor Manager and  
Financial Assistant*  
Adina Walker, *Program Associate*  
Freda Brown, *Donor Database  
Consultant*  
Joyce E. Kilgore, *Charitable  
Engagement Consultant*

Josephine Spurlock, *Financial  
Consultant*  
Ken Weinberger, *IT Consultant*

### All Of Us Staff

Dr. Kay Williams Dawson, *Program  
Director*  
Cheryl M. Thomas, CPA  
*Principal Investigator*  
Cynthia Glenn Cotton, *Collegiate  
Engagement Coordinator*

Larmender Davis, *Community  
Engagement Coordinator*  
Damarcus Haywood, *Collegiate  
Engagement Associate*  
Mandy Hill, *Researcher Specialist  
Payton Terrell, Social Media &  
Communications Coordinator;  
Community Engagement Assistant*  
BriDé Key, *Program Assistant*

## LETTER FROM THE President

DEAR DREF SUPPORTERS,

As I reflect on this past year, I am filled with immense gratitude and pride in all we have accomplished together. This fiscal year has been a powerful testament to the strength of our dedicated team—and to the unwavering support of people like you who believe in our mission.

At DREF, our work has always been rooted in Aligning Advocacy and Action. This year, we made meaningful strides in advancing that mission. From awarding scholarships and providing internship opportunities, to supporting DST chapters through our Charitable Engagement Service, our impact continues to grow.

We proudly commemorated the 70th Anniversary of Brown v. Board of Education at the Stephanie Tubbs Jones Social Justice Forum, elevated the conversation around financial health and wellness, and continued to champion the Research Matters to All of Us initiative. Through webinars, newsletters, social media, and community engagement, we expanded our reach and deepened our impact in ways that truly matter.

These accomplishments would not have been possible without the passion and perseverance of our board, staff, volunteers, donors, and partners. Whether you gave your time, contributed resources, or simply shared our story—your support matters, and we are so grateful.

Looking ahead, we are energized by what's to come. With new initiatives on the horizon and a steadfast commitment to supporting African American women and their families, we remain dedicated to Creating Possibilities and Improving Lives.

Together, we are not just imagining a better future—we are building it.

Thank you for being part of our journey.

With gratitude,



**Renee L. Harper, MBA, MSA, CPCU**  
*President, DREF Board of Directors*



We proudly commemorated the **70th Anniversary of Brown v. Board of Education** at the Stephanie Tubbs Jones Social Justice Forum...

# Fund Development

The Delta Research and Educational Foundation (DREF) implements a comprehensive approach to ensure funds are available to meet the operational, research and educational goals of the organization. This fiscal year DREF led several opportunities to support programming to impact the lives of African

early research, disaster relief and other empowering activities to benefit African American communities

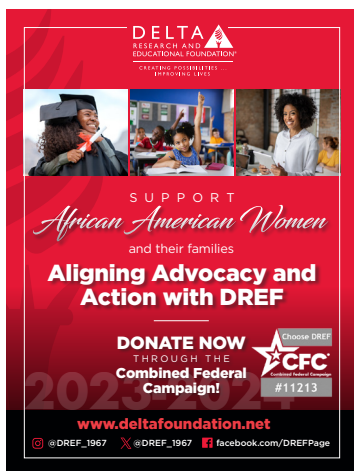
At the end of each calendar year DREF encourages members of DST, partners, friends and colleagues to honor the holiday season of giving for a tax-deductible

appeal to support DREF. To acknowledge the 55th anniversary members of DST gave unqualified support to their Foundation exceeding our goal to raise unrestricted funds in acknowledgment of this milestone year. To enhance fund-raising efforts during

the Stephanie Tubbs Jones Social Justice Forum that highlighted the 70th anniversary of Brown v. Board, DREF commissioned original artwork, Possibilities, to commemorate the event, "Possibilities", created by Kathi Earles Ross, M.D. DREF shared limited edition posters with attendees and DREF constituents for a contribution of \$70.00 or more.

The Roses & Violets Charitable Campaign "A Mother's Love Creates Possibilities" featured the colorful rose and coveted violet to symbolize the regard that persons have for their beloved mothers and special mother figures—unconditional love, utmost respect, and profound appreciation. The campaign was named after two beautiful flowers. Roses symbolize love admiration and friendship. The violet which is near and dear to Deltas, symbolizes loyalty, faith, and inspiration. To commemorate DREF's 55th anniversary contributions of \$55 or more, three special gifts were offered digitally. A spoken word tribute by poet YB Taylor, song by vocalist Imogen, and spoken word tribute to Mothers by artist and author Dr. Ayo M Morton was presented to contributors. The campaign ran from mid-April until Mother's Day, May 14, 2023.

A sincere note of gratitude is extended to DREF supporters who have raised funds and contributed to DREF this fiscal year.



American women and their families. We thank all contributors who answered the call to support the Foundation's fundraising campaigns.

DREF receives on-going support each year from the Combined Federal Campaign (CFC) and other Workplace Giving resources. The CFC, available from September through January, enables federal government employees, active military, and retirees to contribute to DREF with ease and consistency via automatic payroll deduction. Several state employers also offer automatic payroll deduction for charitable causes.

#GivingTuesday, a global initiative that encourages people to donate to charitable causes occurs the Tuesday following Thanksgiving. DREF's participation in this annual day of philanthropy is an aggressive social media campaign throughout the month of November with frequent promotional announcements posted on all social media platforms and shared across DST networks. This #GivingTuesday campaign focused on in our appeal to ensure that operation and programmatic endeavors—grantmaking, scholarships, schol-





# Community Empowerment Grants

## Tracy Area Alumnae Chapter (California)

### Farwest Region – Delta Sigma Theta Sorority, Inc.

Empowerment Day, hosted by the Tracy Area Alumnae Chapter, was a program designed to empower youth by equipping them with concrete tools and resources for building healthy relationships and prioritizing their mental and physical well-being. The theme “Who’s on Your Team?” provided a roadmap for the youth to develop confidence, discover their voice, normalize seeking help, navigate social interactions, discover healthy coping mechanisms, as well as resources for bullying, substance abuse and suicide. It was a collaborative effort with many healthcare professionals and other community partners. Participants engaged in interactive exercises to foster discussions. Because of the DREF Community Empowerment Grant, the program, previously for middle and high school girls, was extended this year to be a co-ed event.



Tracy Area Alumnae Chapter (CA)

## Quaker City Alumnae Chapter (Pennsylvania)

### Eastern Region – Delta Sigma Theta Sorority, Inc.

The program Reaching Higher After High School, hosted by the Quaker City (PA) Alumnae Chapter, was designed to educate students about the various opportunities after graduation. This program was kicked off by a local high school ensemble, as well as a DJ. Each participant was able to visit “Information Stations” which were tables with representatives featuring various post high school opportunities in higher education and careers. There was full support from local civic and community organizations, as well as local higher learning institutions. The Information Stations were



Quaker City Alumnae Chapter (PA).

also utilized to promote the importance of community service and finding the volunteer opportunity that addresses specific interest within the community. Finally, a myriad of guest speakers presented to the participants, including several motivational speakers: someone to address financial aid & admissions, collegiate life, and identifying strengths to build your future. The program was a success as it provided not only pertinent information and resources, but the positive influence needed to reach our youth.



## 2023-2024 Award Recipients

- ▲ Atlantic City Alumnae (Eastern Region)
- ▲ Century City Alumnae (Farwest Region)
- ▲ Galveston Alumnae (Southwest Region)
- ▲ Northwestern Wisconsin Alumnae (Midwest Region)
- ▲ Omaha Alumnae (Central Region)
- ▲ Quaker City Alumnae (Eastern Region)
- ▲ Tri-County(MD) (Eastern Region)
- ▲ Tracy Area Alumnae (Farwest Region)
- ▲ Richmond Alumnae (South Atlantic)
- ▲ South Palm Beach County Alumnae (Southern Region)

# The 2023-2024 Scholarship Recipients



DREF awards scholarships and internship opportunities to student applicants entering college or continuing their academic programs. Students must meet both academic and community service requirements. The following scholarships awards to students for 2023-2024 were:

## Oleta Lawanda Crain Scholarship



The Oleta L. Crain scholarship is made possible by a generous donation to the Delta Research and Educational Foundation by Delta Sigma Theta Sorority member Oleta Lawanda Crain, who resided in Denver, Colorado. The scholarship supports a graduating senior from Colorado, Oklahoma or Missouri, attending an HBCU.

**Awardee:** Teriya Chanell King- graduate of Wewoka High School, Wewoka, Oklahoma Attending Langston University as Nursing major

Sorority and retired educator, who resided in Southern California. The scholarship supports a student majoring in Elementary Education

**Awardee:** Elizabeth Jordan Mickens of Springfield, Massachusetts - Attending Marymount Manhattan College as an Education major



## Ruby Dee Legacy of Sisterhood Scholarship

The Ruby Dee Legacy of Sisterhood Scholarship for the Arts is made possible by a generous donation to the Delta Research and Educational Foundation (DREF), by Dr. Francene Break-

field and L. Denise Wells, a longtime member of Delta Sigma Theta Sorority, Inc. and the Co-Authors of An Anthology of Sisterhood. The scholarship supports a student majoring in communications, journalism, and the Arts.

**Awardee:** Karla Marie Sanford of New York - Columbia University Graduate Student majoring in Journalism.

## Eula Dean Roby Scholarship



The Eula Dean Roby Scholarship is made possible by a generous donation to the Delta Research and Educational Foundation by Eula Dean Roby, a longtime member of Delta Sigma Theta





# Financial Health and Wellness

The Delta Research and Educational Foundation (DREF) Financial Health and Wellness Program was a 10-week, interactive learning experience for more than 1,000 participants throughout the United States and some Caribbean Islands. The program launched in September 2023 and ended in November 2023.

The objectives of the initiative were for participants to:

- ▲ Understand how financial success can lead to accomplishing major goals, i.e., getting an education, purchasing an automobile, purchasing a home, and saving for retirement.
- ▲ Learn how to establish credit and maintain good credit.
- ▲ Gather knowledge about financial institutions such as Banks, Loan Companies, Check-cashing Facilities, Investment Firms, and Insurance Companies.
- ▲ Understand the concepts of saving and spending.

The program was facilitated by financial expert Dr. Lynn Richardson and her team from W.E.A.L.T.H. University, who challenged and changed mindsets as well as groomed participants to be proactive in understanding financial vocabulary, common practices and developing savings and investment plans. Participants received tools that will help them continue their journey to financial wellness. More than 75% of the participants surveyed said that they increased their financial knowledge and learned information that will help them have better financial futures. Some of the comments shared on program evaluations were:

"It was very educational, I left with a lot of value. Not only value that I can use for myself, but value I can teach my children and others. We need a lot more teaching on wealth and building generational wealth, especially for our African American population."

"Since completing the course, I've eliminated \$200 of monthly unnecessary expenses. With those funds I was able to apply those savings towards credit card debt. The tools learned during the courses has impacted how I think about my earnings and savings!"

Each week, door prizes including books on finance, budget planners, gift cards and financial consulting were awarded to help participants get a jumpstart on financial health and wellness. A raffle was held during the last week of the training and a down-payment on a home was awarded as the grand prize.

The program is archived in video, and housed on the DREF website and on YouTube so that it can be viewed in perpetuity. DREF encourages members of Delta Sigma Theta Sorority, Incorporated, community groups, individuals and other entities wishing to become more fiscally empowered to utilize the video series as a training tool.



## Stair Steps to W.E.A.L.T.H.

1. Stair Steps to W.E.A.L.T.H.
2. Spend Less Money – September 14, 2023
3. Get More Money – September 21, 2023
4. Get Your Money Back – September 28, 2023
5. Make Your Money Grow – October 5, 2023
6. Protect Your W.E.A.L.T.H. – October 12, 2023
7. Own Where You Live – October 19, 2023
8. Maximize Your Credit Health – October 26, 2023
9. Adopt a Giving Mindset – November 2, 2023
10. Questions, Answers & Strategy – November 9, 2023
11. Questions, Answers & Strategy – November 16, 2023

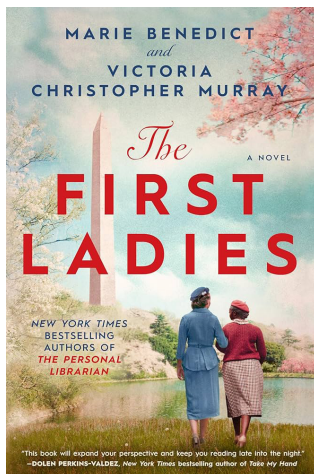
# The Center

## The Center for Research on African American Women

The Center for Research on African American Women (CRAAW), commonly called “The Center” is the hub of DREF’s research and educational programming. This work is spearheaded by the Sister Scholars Advisory Council (SSAC), which provides scholarly studies and resources that impact the lives of African American women, specifically in the areas of Economics, Education, Health and Wellness, International Affairs, and Public and Social Policy. The Sister Scholars Advisory Council is comprised of researchers and practitioners from various disciplines. During 2023-2024, Center activities included the Stephanie Tubbs Jones Forum, selection and support of the Stephanie Tubbs Jones Intern, publication of the Sister Scholars reading lists and National Reading Circle Book Discussion.

### Spring 2024 National Reading Circle Book Discussion

DREF Sister Scholars Advisory Council partnered with National Council of Negro Women and Hurlock Marketing Enterprises for the 2024 National Reading Circle. The virtual book discussion of the New York Times bestseller, *The First Ladies* by Marie Benedict and Victoria Christopher Murray, took place, Tuesday, March 26th, 2024.



This historical fiction selection chronicles the friendship between First Lady of The United States, Eleanor Roosevelt and Founder of the National Council of Negro Women, Mary McLeod Bethune, often called “The First Lady of Negro America” or “The First Lady of The Struggle”. Speakers included Elsie Cooke-Holmes, International President and Chair, Board of Directors, Delta Sigma Theta Sorority, Incorporated; Rev. Shavon L. Arline-Bradley, President and CEO, NCNW; Dr. A. Lois Keith, Chair, NCNW Board of Directors; Renee Harper, President, DREF Board of Directors; Dr. Tchicaya Robertson, Chair DREF Sister Scholars Advisory Council; the book’s co-author Victoria Christopher Murray and Dr. Antoinette

M. Rogers, DREF Director of Programs. The book discussion was facilitated by Patricia Hurlock of Hurlock Marketing Enterprise. *The First Ladies* was one of the selections on the Spring 2024 Sister Scholars Reading List.

Each year, the Sister Scholars Advisory Council curates reading lists of books for and by African American authors, including members of Delta Sigma Theta Sorority, Incorporated. The list is comprised of selections from various literary genres.

### 2024 Stephanie Tubbs Jones Summer Intern

The Stephanie Tubbs Jones (STJ) Summer Internship Program for women of color is a collaboration between the Delta Research and Educational Foundation (DREF) and the Congressional Black Caucus Foundation, Inc. (CBCF) Internship Program.

The Delta Research and Educational Foundation established the Stephanie Tubbs Jones Institute for Social Justice in 2008 under its Center for Research on African American Women to perpetuate the extraordinary life, leadership, and legacy of Delta Sigma Theta Sorority, Inc. member the late Congresswoman Stephanie Tubbs Jones (D-Ohio).

2024 STJ Summer Intern **Jordan Danielle Ford**, Senior, Leadership Studies major; Education and Society minor, University of Richmond, Rho Rho Chapter, Delta Sigma Theta Sorority, Inc. intern with the Office of Representative **Joyce Beatty** (D-Ohio), also a member of Delta Sigma Theta Sorority, Incorporated.





## 2024 Stephanie Tubbs Jones Social Justice Forum

On Monday, March 11, 2024, DREF proudly hosted the 14th Annual Stephanie Tubbs Jones Forum during Delta Days in The Nation's Capital. The theme for the forum was *70 Years Since Brown: Triumphs and Challenges*. Program participants included Elsie Cooke-Holmes, International President, CEO, and Chair, National Board of Directors, Delta Sigma Theta Sorority, Incorporated; Renee Harper, President, DREF Board of Directors, Karla M. Green, Executive Director and Director of Programs, Dr. Antoinette M. Rogers

The lively panel discussion on societal progress in education and the state of American education since the *Brown v. Board* decision, was moderated by Kalila Hines Winters, Senior Advisor, Office of the Secretary, US Department of Education.

Panelists were Ashley White, Assistant Professor, University of Wisconsin- Madison and Education Fellow- NAACP; Merwyn Scott, Director, Community Advocacy and Partnership Engagement, National Education Association; Gary Flowers, Host of the Gary Flowers Show, policy analyst and former Field Director, Rainbow PUSH Coalition; Alexis Holmes, Executive Director, White House Initiative on Advancing Educational Equity, Excellence & Economic Opportunity for Black Americans.

The program concluded with unveiling of Possibilities, a mixed media print commemorating the 70th Anniversary of *Brown v. Board*. Dr. Kathi Earles Ross, an Atlanta-based artist and physician, was commissioned to create the artwork.



## 2024 STJ Social Justice Forum Panelists



**Alexis K. Holmes**  
Executive Director, White House Initiative on Advancing Educational Equity



**Ashley White**  
Assistant Professor, University of Wisconsin- Madison



**Gary L. Flowers**  
Political Analyst at The Gary Flowers Show



**Kalila Hines Winters**  
Former Senior Advisor, Office of the US Department of Education



**Merwyn Scott**  
Lobbyist at National Education Association

# Operations Report

## REPORT OF THE DREF Executive Director



Karla M. Green, Executive Director

### The small, hard-working team at DREF is pleased to present the 2023/2024 Annual Report.

Our focus over the last year has been building capacity within the organization as well as continuing to strengthen relationships with our partners.

We continue to celebrate many milestones. Specific highlights include:

- ▲ Received and processed \$4.5 million in grants, donations, contributions, fundraising, and investment income
- ▲ Migrated the accounting system from QuickBooks Desktop to QuickBooks on-line
- ▲ Accounts payable conversion to Mineral Tree
- ▲ In-Office computing and network modification
- ▲ New and improved DREF website
- ▲ Online Scholarship, Internet, and Grantmaking overhaul
- ▲ DREF Financial Health & Wellness Webinars; over 5,000 registered program participants
- ▲ Annual Cost Savings Analysis; \$21,264
- ▲ Received over \$500K in contributions from Macy's to enhance programming needs for Delta Sigma Theta Sorority, Inc.

Our focus over the last year has been **building capacity** within the organization as well as continuing to **strengthen relationships** with our partners.

Moving forward, we will continue to adjust to a new "normal" while adapting to a changing environment. We look forward to optimizing operations, while focusing on customer needs, expectations, and overall improvement.

Despite the challenges and constraints, it has been a productive year which would not have been possible without our partners. Thanks to you – our staff, Board of Directors, volunteers, and donors – and your unwavering commitment to stand by us, innovate with us, and invest in us. It is only with your supported commitment that we are able to serve over 300 chapters across the nation. Thanks again, for being a valued supporter as we continue to work together to improve lives and create possibilities.

With a Servants Heart,

A handwritten signature in black ink that reads "Karla".

Karla M. Green  
Executive Director

# 2023 - 2024 Financial Statement

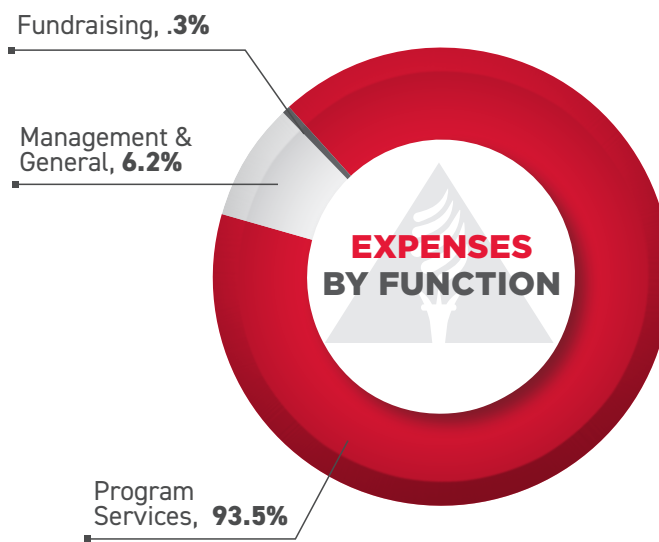
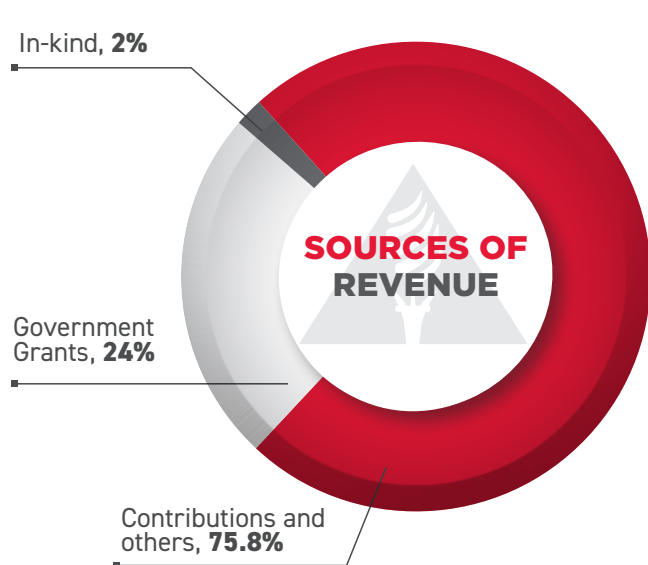
## ASSETS

Cash and Cash Equivalents	3,724,836
Investments	7,371,933
Fixed Assets	10,105
Noncurrent Assets	40,500
Other Assets	249,388
<b>Total Assets</b>	<b>\$11,396,762</b>
<b>Total Liabilities</b>	<b>\$123,933</b>

## NET ASSETS

Without Donor Restrictions	716,033
With Donor Restrictions	10,556,796
<b>Total Net Assets</b>	<b>\$11,272,829</b>
<b>Total Liabilities &amp; Net Assets</b>	<b>\$11,396,762</b>

## STATEMENT OF ACTIVITIES





# Donor Roll Call

## Unrestricted Donors

### Visionary Donor \$100,000 and Above

Delta Sigma Theta Sorority, Inc.

### Luminary \$10,000 - \$24,999

Florida Highway and Safety

Motor Vehicles

Fidelity Charitable Fund

The Benevity Community Impact Fund

### Innovator \$5,000-\$9,999

Dignity Memorial fund

Keenya L. Graham

Darylene S Harris

Stephanie Nellons Paige

### Change Agent \$2,500 - \$4,999

Rhonda Arrington

Doris Gray Brown

Brenda Deal

Tina Fernandez

Kenya L. Graham

Michele Hagans

Elsie Cooke Holmes

Aysha Khoury

Yaminah A. Leggett Wells

Carolyn Lewis

Shirley Norman Taylor

Donata Ross

Maxine White

### Catalyst \$1,000-\$2,499

Krystal Alves

Victoria Bark

Victoria Barnes

Susan Black

Carin Boyd

Leona Bridges

Alisa Brooks

Gloria Brooks

Johnnie Brooks Booker

Andrea Brown

Joan D. Brown

Lisa Brown

Roslynn Cargile

Josie Daniels

Shawn Davis

Phoebe Dixon

Deborah Elam

Renee Ford

Shonnal Geary

Lori Gibbs

Teresa Harman

Renee Harper

Steven Hunter

Leslie Howard

Steven Hunter

Dee Dee James Kong

Stephanie Jones

Deborah Jones Buggs

Gwendolyn King

Brenda Lambert

Cynthia Landrum

Timothy Lansdown

Rasheeda Liberty

Nicole Lindsey

Nigel Long

Nicole Matthews

Vonetta Mickens

Yanique Ollie Moore

Rita Moss

Fredric Navarre

Suzanne Brown Peters

Tonia Powell

Joan Prince

Sade Reid

Louise A. Rice

Diane Ridley

Tchicaya Ellis Robertson

Regina Rock

Constance Ross

Betty Sears

Cheryl Thomas

Marian Thompson

Johnnie Turner

Barbara Wilson

Angela Williams

Soraya Williams Farver

Edith Wright

Anjanette Wyatt

Terry Upchurch

### Advocate \$500-\$999

Tonia Bickham

Jennifer Bishop

Susan Black

Lavonnie Brinkley

Doris Brown

Susan Brown Peters

Debra Bunkley

Ophelia Chapman

Vickie Colenburg

Lisa Cook

Nancy Cooke

Lya Coulter

Leslie Cousins Mond

Barbara Crawley

Beverly C. Daniel

Jannette Dates

Ida Dawson

Gladys Deloney

Atara Dorsey

Tammy Dotson

Bonita Edwards

Gail Edwards

Tekisha Everette

Cecil Flamer

Patricia France

Doris Ford Poindexter

Lois A Garland Patterson

Kidada Gilbert Lewis

Lou Gould

Florida Grimes

Gioia Herring

Tonya Horton

Melva Housy

Jacqueline Jackson

Kimberly Johnson

Sandra Phillips Johnson

Alondra Jones

Renee Shaw Jones

Tracy Jones

Roneal Josephs

Alan King

Lorraine Lee

Sonya Lockett

Valerie Lott

Tamara Marshall

Christine Martin

Shalanda Martin

Janis Massey

LaVerne Matthews

Debra Clayton McAllister

Robelyn McNair

Jocelyn Merisca

Pamela J. Middleton

Joi Moore

Rachael Murphy Humphrey

Nancy Neal

Karen Nelson

Elizabeth R Oates

Elizabeth O'Dell

Lori Paschal

Barvette Patterson

Deborah Peaks Colemam

Vanessa Pilate

Marjorie Powell

Joan Prince

Pamela Pullen

Laurie Reid

Tiffany Riddick

Yvette Robinson

Akoss Schuppius Assane

Lasaundra Scott

Karen C. Somerville

Deborah Stapleton

Deborah Taliaferro-Holmes

Nicole Taylor

Julie Taylor Smith

Angela Tilghman

Deloris Turner

Dorcas Washington

Annie Whatley

Mary M. White

Monique S White

Traci Williams

Debra Williams

Gloria Riddick Williams

### Collaborator \$250-\$499

Takeia Anthony

Michael Barry

Sheryl Battles

Carlene Blanding

Dawn Brooks-Ellis

Stephanie Browne

Diane Burbie

Erica Burley

Nancy Carpenter

Pinkey Carter

Valencia Compton-Bauswell

Tais Crawford-Thomas

Patricia Daniel

Ronalyn David

Ida Dawson

Denise Duncan

Felecia Echols

Rosa Edwards-Ellis

Cheryl Franklin

Shari Gooden

Karla Green

Emily Guss

Cathy Hammond-Moulton

Hallie Hobson

Patricia Holland

Karen Howze-Samuels

Stephanie Hughes

Julie Ivy

Robin Jacobs

Ethel D Jacobs Briggs

Johnnetta Jones

Carolyn E Lewis

Cheryl Lewis

Shirley Lewis-Brown

Kemba Logan Metropoulos

Vanessa Marzette

Dr. Laurie Midgette

Shellinda Miller

Regina Milteer-Rock

Dannette Mitchell

Denise Moret

Kenneth Nunn

Jeanella Fuller Pendleton

Ann Pogue

Tamara Ritchey Powers

Suzanne Randolph Cunningham

Antoinette Rogers

Constance Ross

Ellen Sandidge

William Saunders

Karen Stanley

Sandra Stewart

Stacey Stewart

Lynnette Thompson Brinson

Angela Tilghman

Michelle Tucker

Daphne Walker

Tammy Warren

Dorcas Washington

Shelly Weeks-Townsend

Cheryl Westmoreland

Ranada Williams

Gloria Williams  
Vicki Davis Williams  
Sonia Williams, MD  
Kay Williams-Dawson  
Frances Wilson  
Donna Wilson  
Minnie Wilson

## Unrestricted Chapters

### Catalyst \$1,000-\$2,499

North Jersey Alumnae Chapter  
Albany (GA) Alumnae Chapter  
Federal City Alumnae Chapter  
Dallas Alumnae Chapter  
Phoenix Metropolitan Alumnae Chapter

### Collaborator \$250-\$499

Arlington (TX) Alumnae Chapter  
Burlington Alumnae Chapter  
East Point College Park Alumnae  
Ft Washington Alumnae Chapter  
Los Angeles Alumnae Chapter  
Memphis Alumnae Chapter  
Mississippi Gulf Coast Alumnae Chapter  
Montgomery County Alumnae Chapter  
Nassau Alumnae Chapter  
New York Alumnae Chapter  
Norfolk Southern Alumnae  
North Jersey Alumnae Chapter  
Oklahoma Alumnae Chapter  
Orlando Alumnae Chapter  
Petersburg Alumnae Chapter  
Prince George's County Alumnae Chapter  
Queens Alumnae Chapter  
Salisbury Alumnae Chapter  
San Bernardino Riverside Alumnae Chapter  
Sumter Alumnae Chapter  
Tuscaloosa Alumnae Chapter

## Combined Federal Campaign (CFC) and Workplace Giving

Valtressia Austin  
J Latease Bailey-Close  
Dorothy Baker  
Tanja Banks  
Sharon D Beard  
Krystaa Beck  
Jennifer Bishop  
Susan Black  
Jamesia Blunt  
Nicole Bohannon  
Kandis Boyd  
Joyce Broiles-Hill  
Shelise Brooks

Claudette Brooks  
Kimberly Brown  
Crystal Brown  
Kristen Brown-Lapooe  
Reginald Carr  
Sharon Carr  
Schelli Collins  
Adrian Dance  
Shawn Davis  
Debbie Dawson  
Esmerelda Dickson  
Tameraa Diggs  
Evelyn Dixon  
Cheryl Donald  
Teria Dowdy  
Raenell Drafts  
Marciaa Dukes  
Stacey Dwyer  
Tamakia Edwards  
Batisa Edwards  
Felicia Ellison  
Robin Evans  
Ayoka Fajardo  
Janel Fitzhugh  
Jennifer Franks  
Victoria Galloway  
Yolanda Garmon  
Marquette Gill  
Jayne Gold  
Harold Goodridge  
Jeanette Goza  
Terri Griner  
Regenia Griswold  
Jennifer Haley  
Staceea Hall  
Jerica Hamilton  
Malinda Hargrove-Miller  
Jennifer Harris  
Twylar Haskins  
Etta Hawkins  
LaVonne Hester Smith  
Jessica Hill  
Lakeisa Hilton  
Andrea Houston  
Amanda Hueston  
Inette Hutching-Brown  
Laticia Jefferson  
Junel Jeffrey  
Shawn Jeter  
Crystal Johnson  
Rhonda Jones  
Tonia Jones Powell  
Stephanie Knox  
Catherine Knox  
Brenda Lambert  
Patricia Lee  
Cynetra Mason  
Bettye Massenburg Latimer  
Rosalyn Matthews  
Tami Mcghee  
Phyllisha Mitchell

Sheila Moore  
Melinda Murphy  
Monique Nelson  
Teressa Newton  
Jennifer Norman  
Traa Pinkney-Nichols  
Patricia Plummer  
Nichelle Poe  
Melinda Pope  
Kimberly Rains  
Danika Richardson  
Karen Roberts  
Ophelia Robinson  
Truline Rodgers  
Cherie Rogers  
Crystal Rutland  
Tamela Saldana  
Thomasa Sanders  
Tamara Scott  
Melanie Sias  
Nicolea Sirju-Johnson  
Nelda Smith  
Giovanni Smith  
Tracy Sparks  
Marsha Starks  
Trina Stewart  
Dia Taylor  
Elonia Taylor  
Chele Taylor-Jennifer  
Kimberly Brown  
Anetra Tucker  
Monica Vereen  
Del Watson  
Dawn Wayman  
Alecia West  
Whitney White  
Keva Williams  
Felecia Williams  
Kerri Williams  
Lisa Williams  
Patrica Williamson  
Nakia Womack  
Arlene Wongus  
Nicole Wright  
Amber Yancey-Carroll  
Abbott Laboratories - EGC  
Aetna Foundation, Inc.  
Allstate  
Allstate Foundation  
Allstate Giving Campaign  
Altria  
America's Best Local Charities  
CCSF  
America's Charities  
Ameriprise Financial  
Aramark  
AT&T  
AT&T Employee Giving Campaign  
Bank of America Charitable Foundation  
Benevity Community Impact

Fund  
Blue Cross Blue Shields  
BMO Financial Group  
BMW of Naples  
Boeing Company Employee Individual Giving Program  
Booz Allen  
Celeste Allen  
City of Orlando  
Coca-Cola Foundation Matching Gifts Program  
Community Health Charities  
CSAA Insurance Group  
CSX Transportation, Inc.  
Dell  
Enterprise Rent-A-Car Company of Rhode Island, LLC  
Environmental Federation of NC  
Estee Lauder Companies  
Fidelity Charitable Gift Fund  
Gates Foundation  
GE Appliances  
GE United Way Campaign  
Geraldine R. Dodge Foundation  
GivePlus Program  
GlaxoSmithKline Foundation  
Goldman Sachs Matching Gift Program  
HCA Caring for the Community  
HCA Foundation  
Heart of Florida United Way, Inc  
Honeywell International Charity Matching  
Huron Consulting Group, Inc.  
IBM Employee Services Center  
Intel Foundation  
Johnson & Johnson  
JP Morgan Chase  
KPMG Community Giving Campaign  
Lumen  
Macy's  
Merck Foundation  
Meredith Corporation Foundation  
Microsoft  
Microsoft Matching Gifts Program  
Morgan Stanley c/o CyberGrants Inc.  
National Society Daughters of the American Revolution  
Nationwide Foundation C/O CyberGrants Workplace Giving Program  
Pfizer Foundation Volunteer Program  
PG&E Corporation Foundation  
Pledging Foundation  
Progressive Casualty Insurance Foundation  
Raytheon Technologies  
Razoo Foundation

Shell Employee Giving Program  
 Shell Oil Company Foundation  
 Matching Gifts  
 Silicon Valley Community  
 Foundation  
 State Farm Companies  
 Foundation  
 State Farm Mutual Automobile  
 Insurance Company  
 Strada Educational Network  
 Synchrony Corporate Citizenship  
 T. Rowe Price Foundation  
 Texas License Plates  
 The GE Foundation  
 Travelers Community  
 Connections  
 Travelers Property Casualty  
 TRUiST  
 U.S. Bank Foundation  
 UHG  
 Union Pacific Fund for Effective  
 Government  
 United Health Foundation  
 United Illuminating Company  
 United Student Aid Funds

United Way California Capital  
 Region  
 United Way of Central &  
 Northeastern Connecticut  
 United Way of Central Carolinas  
 United Way of Central New  
 Mexico  
 United Way of Coastal Fairfield  
 County  
 United Way of Greater Houston  
 United Way of Greater  
 Philadelphia & SNJ  
 United Way of Greater Richmond  
 & Petersburg  
 United Way of Greenville County,  
 Inc.  
 United Way of King County  
 United Way of Metropolitan  
 Dallas, Inc.  
 United Way of Midland County  
 United Way of Monmouth County  
 United Way of Monterey County  
 United Way of North Central  
 Florida  
 United Way of Putnam County

United Way of Rhode Island  
 United Way of South Hampton  
 Roads  
 United Way of Southeastern  
 Pennsylvania  
 United Way of Tampa Bay  
 United Way of the Bay Area  
 United Way of the Bluegrass  
 United Way of the National  
 Capital Area  
 United Way of the Virginia  
 Peninsula  
 United Way of York County  
 United Way San Diego County  
 UnitedHealth Group/Employee  
 Giving Campaign  
 Vanguard  
 Veeva  
 Walmart  
 Wells Fargo Community Support  
 Campaign  
 Your Cause Corporate Employee  
 Giving Programs  
 Your Cause LLC Trustee for  
 Medtronic Foundation

Volunteer Grant Program  
 Your Cause, LLC  
 Your Cause, LLC Trustee for The  
 HCA Foundaion  
 Yourcause LLC Trustee for Est  
 Cares Employee Donation  
 YourCause, LLC for Hewlett-  
 Packard  
 YourCause, LLC for JC Penney  
 YourCause, LLC or PWC LLP  
 YourCause, LLC Trustee  
 YourCause, LLC Trustee  
 for AbbVie Employment  
 Engagement Fund  
 YourCause, LLC Trustee for  
 Accenture LLP  
 YourCause, LLC Trustee for  
 Boeing  
 YourCause, LLC Trustee for Duke  
 Energy Foundation












CREATING POSSIBILITIES ...  
IMPROVING LIVES

1703 New Hampshire Avenue, NW  
Washington, DC 20009  
T 202.347.1337  
[www.deltafoundation.net](http://www.deltafoundation.net)  
[info@deltafoundation.net](mailto:info@deltafoundation.net)

 [facebook.com/DREFPage](https://facebook.com/DREFPage)  
 [instagram.com/DREF\\_1967](https://instagram.com/DREF_1967)  
 [www.linkedin.com/company/delta-research-and-educational-foundation/](https://www.linkedin.com/company/delta-research-and-educational-foundation/)

## IN APPRECIATION

The DREF Board of Directors extends immense gratitude to Delta Sigma Theta Sorority, Inc. International President Elsie Cooke-Holmes, the National Executive Board, and the DST National Headquarters Staff. Sincere appreciation is also offered to all of our donors, volunteers, collaborative partners, and the DREF Staff.