

DELTA   
RESEARCH AND  
EDUCATIONAL FOUNDATION®

CREATING POSSIBILITIES ...  
IMPROVING LIVES

# *Standing Firm*

Advancing the  
Mission of DREF

ANNUAL  
REPORT 2021  
2022



# Vision

The DREF vision is to create possibilities and improve lives.

## DREF Board of Directors

### OFFICERS

Carolyn E. Lewis, MBA, PRESIDENT  
Constance Y. Ross, Esq., VICE PRESIDENT  
Deborah Jones-Buggs, SECRETARY  
Renee L. Harper TREASURER

### MEMBERS

Beverly E. Smith,\*  
NATIONAL PRESIDENT & CEO  
DELTA SIGMA THETA SORORITY, INC.

Johnnie Brooks Booker  
Leona M. Bridges  
Doris Gray Brown  
Diamond Compton\*  
Josie V. Daniels, Pharm.D.  
Doreen Dixon\*  
Tina Fernandez  
Teresa D. Harman, CPA  
Steven V. Hunter, Esq.  
Andria Jeffries\*  
Nicole Lindsay  
Nigel W. Long, Esq.

# Mission

The Delta Research and Educational Foundation (DREF) identifies issues affecting Black women, their families, and communities of the African Diaspora, globally, and creates solutions through research, programming, and funding in support of charitable and educational programs of Delta Sigma Theta Sorority, Inc. and other collaborative organizations.

Yanique O. Moore  
Fredric A. Navarre  
Stephanie Nellons Paige  
Suzanne Brown Peters  
Joan M. Prince, Ph.D.  
Tchicaya Robertson, Ph.D.  
Annie P. Whatley  
Angela M. Williams  
Anjanette Wyatt, Pharm.D.

### EX-OFFICIO MEMBERS

Cheryl M. Thomas, CPA,  
EXECUTIVE DIRECTOR, DREF  
Dorcas Washington,  
ACTING EXECUTIVE DIRECTOR,  
DELTA SIGMA THETA  
SORORITY, INC.

*\*Delta Sigma Theta Sorority, Inc. leaders term ended November 22, 2021 and they were succeeded by the following newly elected/appointed persons:*

Cheryl A. Hickmon,  
NATIONAL PRESIDENT,  
DELTA SIGMA THETA  
SORORITY, INC.,  
*November 22, 2021-  
January 20, 2022*

Elsie Cooke-Holmes,  
NATIONAL PRESIDENT,  
DELTA SIGMA THETA  
SORORITY, INC.  
*January 2022-present*

Dee Dee James Kong  
Soraya Williams Farver



DREF Board of Directors as of June 30, 2022.

# President's Letter



A leader is only as successful as her team. I am deeply thankful to have served with such strong, dynamic and committed board members, staff, and members during my presidency.

I want to recognize each of you for your stalwart support and generous contributions that have lifted DREF in so many vital ways. Thanks to you, we are meeting the challenges of our times to ensure that we are *Standing Firm: Advancing the Mission of DREF*.

This Annual Report shares our growth and progress in the 2021-22 fiscal year. Together, we have grown exponentially. We navigated a pandemic and the aftermath, uncertain financial and political times, and a racial reckoning that shook our nation to its core. We met challenges with grace and fortitude, never wavering in our belief that building stronger families and communities will create a more equitable society.

DREF's roadmap to the future is informed by the excellent work of Vivian A. Ware Research Fellow Takela Anthony, Ph.D., who has documented our evolution and created an online archive of DREF history that is enriched by many of your contributions.

Our focus on health grew with the American Pharmacists Association Foundation (APhA) selecting us as a national community-based partner to facilitate Project IMPACT, a year-long national education and wellness program to help prevent Type 2 diabetes.

Education remains a priority as DREF's Delta Teacher Efficacy Campaign (DTEC) and its companion initiative Teachers Advocating to lead Great change (TAG), marked eight years by expanding our team to provide solutions to the education disruptions of the COVID-19 pandemic for students, teachers, parents, administrators, and community stakeholders through our new H.E. LIVE Summer Learning Series.

The National Institutes of Health (NIH) provided fifth-year funding for the DREF Research Matters for All of Us Program to continue empowering African Americans to enroll in biomedical research. Our partnerships with eight Historically Black Colleges and Universities, addition of Citywide Coordinators in Milwaukee, New York City, and Denver, and community outreach and pop-up clinic events contributed to more than 337,000 participants enrolling in the program.

I appreciate DREF's Board and Staff—their creativity, innovation, and ability to see beyond challenges to envision something larger and more significant as the lifeblood of this Foundation. My very special thanks to our donors whose support enables us to keep carving new pathways, reaching new vistas, and growing ever stronger as we climb.

It is my honor to have served as DREF Board President for the past seven years. It has been a memorable and impactful journey dedicated to creating possibilities to improve lives in the areas of research, education and charitable programming. Much success to our incoming Board members as they keep DREF moving onward and upward—*Standing Firm* in our mission.

Sincerely yours,

A handwritten signature in black ink that reads "Carolyn". The signature is fluid and cursive, written in a professional style.

Carolyn E. Lewis, MBA  
DREF Board President

# Fund Development

The fund development activities of DREF continue to center around virtual and digital fundraising with minimal in-person engagement. However, DREF returned to traditional fundraising and information sharing as an exhibitor at the 55th National Convention of Delta Sigma Theta Sorority (DST), Inc. held in Atlanta, GA in November 2021. Other fundraising activities included the continuation of #GivingTuesday, the End-of-Year Appeal, the Roses & Violets Mother’s Day Charitable Campaign, the Combined Federal Campaign, and Amazon Smile. A new special event, “The Literary Jam” was held in conjunction with the Foundation’s National Reading Circle as this year’s signature fundraiser.

The use of technology and social media remain instrumental in conducting fund development, as it enables the Foundation to broaden its reach to increase its donor base and to reach an intergenerational audience. As DST chapters expand its local fundraising campaigns, charitable giving, especially in the area of Workplace Giving is ever increasing. The DREF leadership extends appreciation to all donors and collaborative partners for supporting the fundraisers presented this fiscal year; your steadfast commitment is paramount to the Foundation’s success.

## Literary Jam Celebrates Women’s History Month

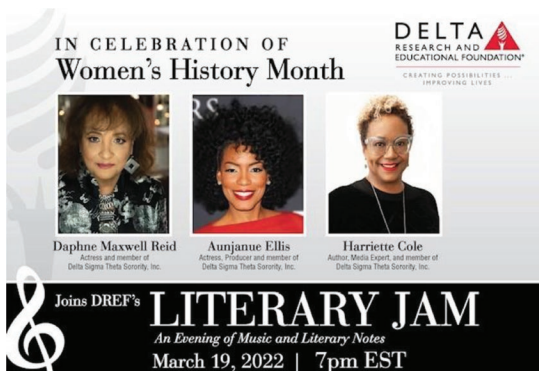
The DREF Fund Development Committee collaborated with the Sister Scholars Advisory Council to present a signature fundraising event that celebrated Women’s History Month and featured a book discussion of the National Reading Circle 2021-22 reading selection: *Just As I Am*, the memoir of the acclaimed late actress Cicely Tyson, a Delta Honorary Member. The virtual special event, held March 19, 2022, was an evening of party music, literary notes and charitable giving to benefit DREF operations.



WASHINGTON, DC— Board Members extend appreciation to Louis Davis, Jr., AARP-DC State Director, at April 2022 DREF Board of Directors meeting. PICTURED L-R: Dr. Joan Prince, Mr. Davis, Annie P. Whatley and Carolyn E. Lewis.

The Literary Jam was a fun, memorable occasion with great music provided by nationally noted deejay Vince Adams of Chicago and a lively book discussion that was led by Delta member Harriette Cole, an author and media expert based in New York City. Distinguished actresses and Delta members Daphne Maxwell Reid and Aunjanue Ellis served as honorary chairpersons of the event. In addition to the book discussion and dance music, a slide show presentation acknowledged the phenomenal contributions of women in the arts.

Approximately \$37,000 was contributed by guests and sponsors logging on for the Literary Jam. Appreciation was extended to the American Association of Retired Persons (AARP)-DC for being a platinum sponsor (\$10,000) for the event. Louis Davis, Jr. AARP-DC State Director extended greetings at the fundraiser and expressed the intent of future program collaboration with DREF.



IN CELEBRATION OF  
Women’s History Month

DELTA  
RESEARCH AND  
EDUCATIONAL FOUNDATION  
CREATING POSSIBILITIES  
IMPROVING LIVES

Daphne Maxwell Reid  
Actress and member of  
Delta Sigma Theta Sorority, Inc.

Aunjanue Ellis  
Actress, Producer and member of  
Delta Sigma Theta Sorority, Inc.

Harriette Cole  
Author, Media Expert and member of  
Delta Sigma Theta Sorority, Inc.

Joins DREF’s  
**LITERARY JAM**  
An Evening of Music and Literary Notes  
March 19, 2022 | 7pm EST

## Roses & Violets Mother's Day Campaign



The annual DREF Roses and Violets Mother's Day Charitable Campaign was held during the spring and culminated on Mother's Day May 8, 2022. DREF supporters were asked to make charitable donations in honor or in memory of their mothers (or mother figures), while also giving them an opportunity to lend support to the Foundation. The Foundation collaborated with Delta Sigma Theta Sorority, Inc.'s Strategic Partnership Task Force to present this annual spring fundraiser. DREF supporters were asked to donate \$22 (symbolic of the Sorority's 22 Founders) or more; proceeds raised totaled \$12,668.24.

Individuals contributing to the DREF Roses & Violets Charitable received a prayer saluting mothers, that was composed by the Rev. Dr. Suzan Johnson Cook, a Delta Honorary Member.

### Excerpt from Rev. Cook's prayer

“ Thank you, God, for Mothers: Biological, Adopted, Foster, Village Mothers— For their, care, concern, courage, confidence, caress, correction, protection, direction...

Who loved me enough, to deal with all of my “stuff”  
Who cared and dared enough, to help my dreams come true, even when her dreams may have been delayed, denied or deferred. ”

## Delta Queens Make Return at DST 55th National Convention



The “Delta Queens,” signed lithograph print created by Atlanta artist Selma Glass, made a memorable return to the DST National Convention held in Georgia's capital city, November 2021. First released in 2002 at the 46th National Convention, the artwork re-emerged as a DREF fundraising incentive at the 55th National

Convention. Contributors donating \$100 or more were offered an unframed “Delta Queens” print. Resulting in a successful fundraiser for DREF donations totaled \$23,170.32.

## Special Appreciation to CFC and Workplace Donors

The DREF Board of Directors acknowledges the resolute charitable giving of its Workplace Donors, including Combined Federal Campaign (CFC) and private industry contributors. Thank you to all who contribute to DREF regularly through payroll deduction at your workplace. Workplace donors are vital to the daily operation of the Foundation. The DREF CFC number is 11213. See Workplace Giving Donors listed in this year's Donor Roll at the end of this report.



## Giving Tuesday: Annual Day of Philanthropy

As the nation concluded Thanksgiving holiday festivities, the charitable giving season intensified the following week on November 30, 2021 with Giving Tuesday, the Annual Day of Philanthropy. DREF conducted its Giving Tuesday fundraising effort, employing the theme: “Standing Firm with our Partners for Possibilities.” Supporters were asked to seize the opportunity to join the ranks of “everyday philanthropists” by making a donation on this special day of giving. Three options were offered to DREF stakeholders to make their donations, i.e. Text-to-Give, customized link, or via check. Contributions received totaled \$15,667 from 174 donors. Donations received fund the DREF Community Empowerment Grantmaking program, scholarships, The Center for Research on African American Women and our daily operation.

# Community Empowerment Grants

The 2021-22 Community Empowerment Grants were awarded to nine chapters of Delta Sigma Theta Sorority, Inc. in three core areas:

- ▲ Educational Development
- ▲ Financial Literacy
- ▲ Health and Wellness

## Educational Development

Fairfax County (VA) Alumnae  
Franklin Tri-County (VA) Alumnae  
Knoxville (TN) Alumnae  
Las Vegas (NV) Alumnae

## Financial Literacy

Nashville (TN) Metropolitan Alumnae  
Quaker City (PA) Alumnae  
Tempe (AZ) Alumnae

## Health and Wellness

Gwinnett County (GA) Alumnae  
Stone Mountain-Lithonia (GA) Alumnae

## Stone Mountain-Lithonia (GA) Alumnae Provides Resources for Autism Awareness



The Stone Mountain-Lithonia (GA) Alumnae Chapter of DST was awarded a Community Empowerment Grant to conduct an initiative on autism entitled “Autism Resources Care Package Drop” for 10 to 12 families that have one member who experiences an autism related diagnosis. The initiative was designed to

provide families with critical resources that could assist with their completing applications for funding and health related services.

The Chapter program coordinator indicated that in its service area, 1 in 53 children is diagnosed as being on the Autism Spectrum, and that the school systems, employers and places of worship face challenges in supporting families affected by the disorder. Advocacy for special needs students and young adults can be difficult for African American families. “The Autism Resources Care Package Drop” was designed to include valuable information re advocacy, respite opportunities for caregivers, and games and tools to assist with the development and independence of persons with autism. Autism spectrum disorder (ASD) is a development disability caused by differences in the brain. People with ASD often have problems with social communication and interaction and restricted or repetitive behaviors or interests.

## Nashville (TN) Metropolitan Alumnae Conducts Financial Literacy Program



The Nashville (TN) Metropolitan Alumnae Chapter was awarded a Community Empowerment Grant to conduct “Making Dollars & Sense,” a financial literacy program for middle school students. The initiative was designed to teach the students to understand money and how it works, creating a foundation for long-term financial literacy and preventing poverty. The Chapter conducts “Making Dollars & Sense” in a rural area that is at high risk for poverty. The Chapter collaborated with the non-profit organization, Children Are People Too of Gallatin, TN.

# Scholarship Funds

## DST Grand Chapter Establishes Cheryl A. Hickmon Scholarship Fund @ DREF

In late January of 2022, the Grand Chapter of Delta Sigma Theta Sorority, Inc. established a scholarship fund at the Delta Research and Educational Foundation (DREF) to honor the memory and legacy of Ms. Cheryl A. Hickmon, the 27th National President of the Sorority, Inc. As of June 30, 2022 funds totaling \$100,239.58 were contributed to the Hickmon Scholarship Fund. Ms. Hickmon was elected as Delta's National President in November 2021 at the Sorority's 55th National Convention held in Atlanta, GA. National President Hickmon, age 59, resided in Hartford, CT. She passed away on January 20, 2022 after a brief illness. Establishment of the scholarship fund in memory of Delta's 27th National President creates an everlasting tribute to her iconic servant leadership while creating opportunities to empower future generations with an education.

Ms. Hickmon was also a member of the DREF Board of Directors and her leadership and service to the Sorority was exceptional and exemplary. She maintained continuous, active membership in Delta since her initiation at South Carolina State University's Alpha Xi Chapter in 1982 and through her membership in Hartford (CT) Alumnae Chapter.

Ms. Hickmon served on the Sorority's local, regional, and national levels. She served as collegiate Chapter President at Alpha Xi, Regional Representative of the South Atlantic Region, served twice as Chapter President of Hartford (CT) Alumnae, Regional Director of the Eastern Region, National Secretary, National First Vice President, and National President of Grand Chapter.



**Cheryl A. Hickmon**  
May 11, 1962 – January 20, 2022

Professionally, Cheryl was employed at Montefiore's Institute for Reproductive Medicine and Health (Hartsdale, NY), a division of the Montefiore Medical Center and a teaching hospital of the Albert Einstein College of Medicine. As a licensed Clinical Laboratory Technologist, she worked in the Reproductive Medical Laboratory for more than 30 years. She supervised the In Vitro Fertilization Laboratories for Andrology and Endocrinology which gave her great joy in assisting couples with the gift of children.

## Using the DREF Charitable Engagement Service

The DREF Charitable Engagement Service offers technical assistance to Delta Sigma Theta Sorority, Inc. on the local, regional, and national levels for its fundraising efforts and enables the Sorority to receive charitable donations. The Foundation currently manages Donor Funds for 300-plus Delta chapters and special entities (individuals, families, DST membership lines, other). Many of the Donor Funds managed by DREF maintain funds that annually award scholarships to students as well as conduct other charitable and educational programming. During the 2021-22 fiscal year, DREF awarded \$635,521.97 in scholarships for funds that it manages.

## Orchidaceous 34 Membership Line Launched "Undaunted" Scholarship Fund

The Orchidaceous 34 Membership Line of Delta Sigma Theta Sorority, Inc. presented a major fundraising activity for its "Undaunted" Scholarship Fund at the DST 55th National Convention held in Atlanta, GA in November 2021. The "Undaunted" Scholarship Fund was

established by the membership line at DREF the previous fiscal year to benefit students attending Howard University. The Orchidaceous 34 Membership Line was initiated at the University's Alpha Chapter in 1985.

During a luncheon special event held exclusively for initiates of Alpha Chapter, the membership line promoted the scholarship fund by offering a fine art print entitled "Undaunted" as a fundraising incentive. The mixed-media art work was created by line member Kathi Earles Ross, M.D. of Atlanta, GA. Dr. Ross is a physician and a professional visual artist. She explained that the print acknowledged the participation of the Delta Founders in the historic suffrage march of 1913 and expressed their undaunted spirit in gaining the right for women to vote.

The "Undaunted" Scholarship fundraiser offers the options of three levels of giving. Contributors donating \$1,000 or more can receive a remarque, numbered Giclee print with artist's original signature; donors contributing \$300 can receive a Giclee, numbered print with original signature; and persons contributing \$150 can receive a numbered print of the art work with a reproduced signature. The fundraiser launched successfully with \$23,800 being raised as a result of the luncheon event. Throughout the remainder of this fiscal year, the fundraising effort continued via social media, direct solicitation, and "word of mouth" with a total of \$43,828 being raised as of June 30, 2022. The fundraising goal is to create ample proceeds (six-figure amount) that will lead to establishing an endowment fund at DREF for the "Undaunted" Scholarship Fund.



"Undaunted" mixed-media art work by Kathi Earles Ross, M.D.

performance major (soprano) at the University of the District of Columbia located in the nation's capital. She received a \$1,000 scholarship.

The DST Eastern Region Arts & Letters Committee presented a fundraiser on May 15, 2022 with proceeds of approximately \$10,000 benefitting the Ruby Dee Legacy of Sisterhood Scholarship. The virtual event was entitled "The Legacy of Ruby Dee: An Afternoon of Artful Remembrance" and featured readings from Ms. Dee's acclaimed book of poetry: "My One Good Nerve." Luminary readers presenting selections from the book included DST National President Elsie Cooke-Holmes, Ambassador Suzan Johnson Cook (Delta Honorary Member), Congressman Hakeem Jeffries (D-NY), spoken word artist Sharisse (She-Salt) Stancil-Alford, journalist Jacque Reid, poet Trapeta Mayson, and author Anita Kopacz.



DST Co-Chairs of the National Arts & Letters Commission Marcia Butler Holt and Canara Price and DST Eastern Regional Director Rosie Allen-Herring participated in the talkback session about the legacy of Ms. Dee following the celebrity

readings. Admission fees and patron donations created the proceeds.

The iconic Ruby Dee (October 27, 1922 – June 11, 2014), an honorary Delta member, was an American actress, poet, playwright, screenwriter, journalist, and civil rights activist. The Dee Scholarship was established at DREF by Delta members: Dr. Francene Breakfield and Dr. L.D. Wells, both of Georgia.

## Ruby Dee Legacy of Sisterhood Scholarship for the Arts

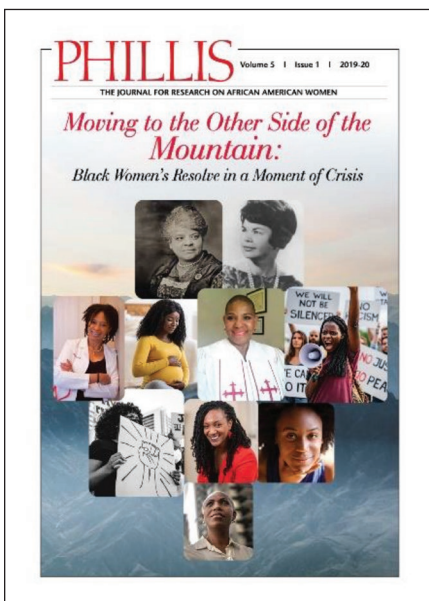
The Ruby Dee Legacy of Sisterhood Scholarship for the Arts was awarded for the third consecutive year in 2021-22 to a deserving recipient. This year's recipient was Victoria Williams, a Delta member who is a voice



# The Center for Research on African American Women

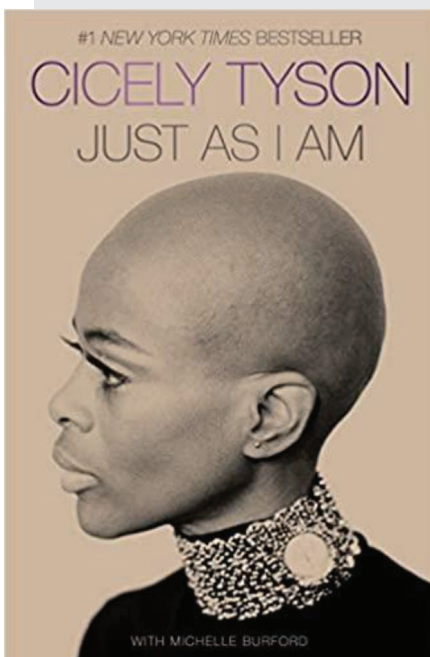
Led by the Sister Scholars Advisory Council, the Center for Research on African American Women (The Center) presents the Foundation’s educational programs and research agenda. This program year, The Center published its scholarly publication—*PHILLIS: The Journal for Research on African American Women*, conducted the National Reading Circle, and implemented programming for the Stephanie Tubbs Jones Social Justice Institute.

## 2021-22 Edition of the *PHILLIS* Journal



The 2021-22 edition of *PHILLIS: The Journal for Research on African American Women* was published in autumn of 2021. Employing the theme, “Moving to the Other Side of the Mountain: Black Women’s Resolve in a Moment of Crisis,” the edition presents eight empowering scholarly essays about health, civic engagement, digital coping skills in community organizing, Black women in the Civil Rights Movement, the challenges of Black women clergy, and more. The personal narratives section includes a feature on voter registration in Georgia, the DREF Research Matters for *All of Us* initiative, maternal child health, self-care, and other topics.

Sister Scholars Pearl Ford Dowe, Ph.D. and Keneshia Grant, Ph.D., served as co-editors of this year’s *PHILLIS Journal*. The publication is a fundraising incentive for the Foundation; donors contributing \$50 can receive a copy.



## The National Reading Circle

The Sister Scholars Advisory Council invited a national audience to read the memoir written by acclaimed actress Cicely Tyson—*Just As I Am* as its 2021-22 book selection. Delta members and other DREF supporters joined the opportunity to read about the legendary actress and Delta honorary member. The virtual book discussion was held on March 19, 2022 in conjunction with the Foundation’s Literary Jam fundraiser. The book discussion for the 300 guests was moderated by media maven Harriette Cole of New York City and lead discussion participants included event honorary chairpersons Daphne Maxwell Reid and Aunjanue Ellis, both actresses and Delta members.

The Sister Scholars also created its annual summer reading list that was circulated on social media.

# The Stephanie Tubbs Jones Social Justice Institute

## STJ Forum at Delta Days

DREF presented its 12th Annual Stephanie Tubbs Jones (STJ) Social Justice Forum at the Delta Days in the Nation's Capital social action program presented by Delta Sigma Theta Sorority, Inc. The STJ Forum was presented as Plenary Session IV on Sunday, March 6, 2022. With the mid-year elections occurring in 2022 and regarded as the most critical election in the nation's history, the entire DDNC agenda focused solely on voting rights. DREF aligned the STJ Forum with the Sorority's focus by presenting a program that addressed the theme: "We Will Never Forget...Sisters in the Struggle for Voting Rights." Panelists included Sister Scholar Paula J. Giddings, author; former NC State Senator Erica Smith, candidate for U.S. Congress; Academy Award nominated actress Aunjanue Ellis, co-creator of "Sunflower" movie on Fannie Lou Hamer; arts organizer Yolanda Rodgers-Howsie, Stepping Into Service Foundation; and CEO Kendra Cotton, New Georgia Project.

The STJ Forum was moderated by Tracee Wilkins of NBC News 4. A videotaped greeting was presented by Delta's Atlantic City (NJ) Alumnae Chapter in remembrance of the historic testimony given by Fannie Lou Hamer, civil and voting rights activist, at the 1964 Democratic Convention held in their city. The Call to Action was a video message taped on the Edmund Pettus Bridge in Selma, AL by Rhonda Briggins, secretary-treasurer of the D4 Women in Action Foundation.

## STJ 2022 Summer Internship



Lydia Fertil

DREF awarded the 2022 STJ Summer Internship to Lydia Fertil, a student at Florida State University (FSU). Ms. Fertil is a dual degree major studying international affairs and cyber criminology. She was assigned to intern in the office of Congresswomen Yvette Clarke (D-New York). DREF presents the internship

in collaboration with the Congressional Black Caucus Foundation, Inc. Created in memory of Congresswoman

Stephanie Tubbs Jones (1949-2008), a Greater Cleveland Alumnae Delta member and democratic U.S. Representative who represented Ohio's 11th congressional district. The STJ Summer Internship is made possible by a generous donation from the Clinton Foundation and key support from Delta member Michele V. Hagans, a former DREF Board member.

## Research Topics

At the Fall 2021 meeting of the Sister Scholars Advisory Council, the following topics were identified as potential research subjects during the next three years:

- ▲ Digital Wellness and Mental Health in the Pandemic
- ▲ Maternal Mortality
- ▲ Invisibility of Black Women and Girls
- ▲ Mental Health: Suicide Among Black College Students, Food Insecurity

## DREF History Research Project

Dr. Takeia Anthony, the 2021-22 DREF Vivian A. Ware Research Fellow, has completed the writing the DREF history. The narrative written by Dr. Anthony was submitted to a Peer Review Panel. The Peer Review Panel provided feedback that aims to develop the history into a compelling and enduring documentation of the Foundation's 55-year history.

## Sister Scholars Advisory Council

Sharon Barnett-Starks, MSW

Wanda G. Brockington, Ph.D.\*  
NORFOLK STATE UNIVERSITY

Elizabeth Clark-Lewis, Ph.D.  
HOWARD UNIVERSITY

Pearl Ford Dowe, Ph.D.  
EMORY UNIVERSITY

Zinga Fraser, Ph.D.  
BROOKLYN COLLEGE

Paula J. Giddings\*  
SMITH COLLEGE

Kandace G. Hinton, Ph.D.  
INDIANA STATE UNIVERSITY

Mary Howard-Hamilton, Ed.D.  
INDIANA STATE UNIVERSITY

Carolyn E. Lewis, MBA  
DREF BOARD PRESIDENT/  
CHAIR, SSAC

Claudia Nelson, Ph.D.  
COPPIN STATE UNIVERSITY

Yarbrah T. Peeples, Ph.D.

Tchicaya Robertson, Ph.D.

Constance Y. Ross, Esq.

Crystal Shelby-Caffey, Ph.D.  
SOUTHERN ILLINOIS  
UNIVERSITY

Marion White, MSN, BSN, RN

\*RETIRED

**STAFF LIAISON:**

Deborah Peaks Coleman,  
DIRECTOR OF PROGRAMS

# Year 5 – DREF Research Matters for *All of Us* Continues to Grow

This is the fifth year that DREF has been awarded funding by the National Institutes of Health (NIH) for the health initiative, Research Matters for *All of Us* Program, which enables us to focus on community engagement, empowerment, research, and enrollment of African Americans in biomedical research.

## CITYWIDE COORDINATORS 2021-2022

**Lisa Johnson Whigham**  
Atlanta, GA



**Keiuna Cropper-Patin**  
Baton Rouge, LA



**Dr. Ayana McCoy**  
Boston, MA



**Dr. Yvonne Collins**  
Chicago, IL



**Dr. Djuana Harvell**  
Denver, CO



**Larmender Davis**  
Detroit, MI



**Dr. Mandy Hill**  
Houston, TX



**LaKeesha Morris-Moreau**  
Miami, FL



**Luevinus Muhammad**  
Milwaukee, WI



**Dr. Michelle Easton**  
New Orleans, LA



**Jakoya Grissett**  
New York, NY



**Sharon Penson**  
Shreveport, LA



In the 2021-22 Fiscal Year, the Program broadened its outreach activities and impact through innovative outreach efforts.

DREF partnered with eight Historically Black Colleges and Universities (HBCUs) during the fall of 2021 and spring of 2022 to administer the Research Accelerates Possibilities (R.A.P.) initiative. R.A.P participants were educated, engaged, and encouraged. Students at Bennett College, Coahoma Junior College, Fayetteville State

University, St. Augustine University, Tougaloo College, Winston-Salem State University, Lincoln University, and Jackson State University received information on various health issues and were encouraged to participate in the *All of Us* Research Program.

The DREF team of Citywide Coordinators was expanded, adding three in January 2022 to fill vacancies in the Milwaukee, New York City, and Denver designated markets. In addition, Kimiyo Harris Williams, M.D.,

joined the team in the new role of Medical Specialist to help facilitate pop-up clinics across the country. In June 2022, DREF's Citywide Coordinators grew and solidified the DREF Research Matters audience base by hosting a dozen exciting community outreach and pop-up clinic events engaging 3,147 participants in the designated cities. The pop-up clinics imparted information in African American communities on multiple aspects of the *All of Us* Research Program, shared details about the enrollment processes and collaborated with partners and peers in the medical community. As of May 2022, more than 491,000 participants completed the overall *All of Us* consent process, more than 337,000 participants were fully enrolled, and more than 1,480 research projects were using *All of Us* data. Approximately 80% of those are part of groups traditionally underrepresented in biomedical research, and 50% are a part of a racial or ethnic minority. This enabled DREF to increase collaborations with the *All of Us* community partners and Health Provider Organizations (HPOs) and Direct Volunteers (DVs) to host events providing information on chronic illnesses and health disparities in the African American community that showed the connections and the benefits of biomedical research and clinical trials to address these illnesses.



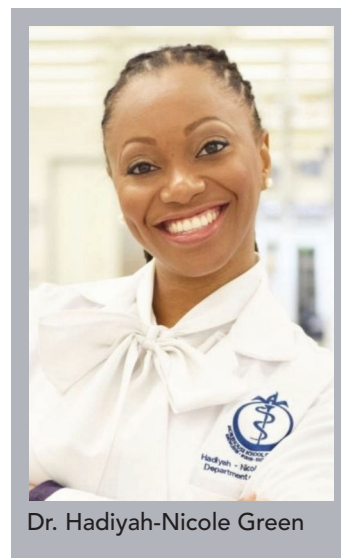
The Foundation increased its focus on research—encouraging African Americans to both embrace careers in this field, and to participate in clinical trials—while encouraging Delta women in the medical and healthcare professions to use the NIH workbench. DREF launched a webinar series to educate minority medical and research professionals on the objectives and benefits of the *All of Us* Research Program. In collaboration with the National Program Planning and Development Committee of Delta Sigma Theta Sorority, Inc., DREF Research Matters hosted a *Deltas in Healthcare and Biomedical Research Summer Symposium* on June 25, 2022, via Zoom. The Louisiana State University Health New Orleans (LSUHNO) School of Nursing was also a collaborative partner for the research symposium. Medical providers and researchers from across the United States joined to share information about the *All of Us* Research Program, which educates African Americans about how biomedical research can affect one's health and wellness. There were 252 registered participants (including 78 physicians, nurses, and researchers) who logged on to learn how they can be a part of the

DREF Research Matters for *All of Us* initiative's national awareness campaign and how to access relevant and quality data in the *All of Us* Research Hub. A panel of distinguished physicians and researchers presented on topics including Maternal Mortality, Healthcare and Climate Change, Hypertension Update, Chronic Kidney Disease Update, and the NIH *All of Us* Research Program Genomic Return and Researcher Workbench.

DREF presented the Dr. Martin Luther King, Jr. Observance and Researcher Roundtable held during MLK Weekend (January 2022) reached more than 4,000 people via Facebook Live and Twitter. The event, which commemorated Dr. King's commitment to social justice and health equity, featured a panel of experts sharing information about the importance of culturally informed biomedical research, social determinants of health disparities, and the importance of personal agency in impacting better health outcomes in people of direct African descent.

DREF kicked off February with the Black History Month Ebony Magazine HBCU STEM

Queen Royalty in Research Virtual Roundtable. The discussion was moderated by journalist Roland S. Martin and featured pioneering humanitarian Dr. Hadiyah-Nicole Green, Ph.D., Founder of the Ora Lee Smith Cancer Research Foundation and Assistant Professor at the Morehouse College School of Medicine. Dr. Green is noted for introducing the world to the next generation of cancer treatments. She was joined at the Research Roundtable by collegiate researchers from Jackson State University, Texas Southern University, Howard University, and Cheyney University of Pennsylvania.



Dr. Hadiyah-Nicole Green

DREF presented the purpose, priorities, and benefits of the *All of Us* Research Program at the Ideation, Innovation, & Collaboration Conference on "The Future of HBCUs" held at The Charlotte Convention Center on June 6 – 8, 2022, in Charlotte, N.C. The event was co-sponsored by DREF and the Higher Education Leadership Foundation (HELFF), bringing more than 500 participants and 75 speakers together for a hybrid in-person and online event that invited dreamers, critical thinkers, and thought leaders to address what sustainability and self-agency look like for HBCUs.

# DTEC-TAG Equity Warriors for Education

DREF's Delta Teacher Efficacy Campaign (DTEC) and its companion initiative Teachers Advocating to Lead Great Change (TAG) made great strides this year in supporting and advancing educational equity.

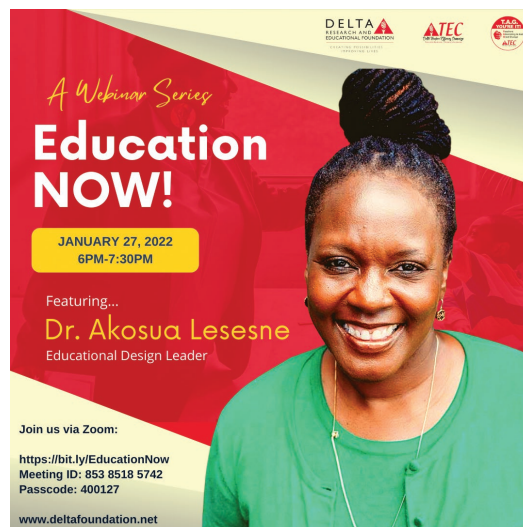


The six Equity Warrior teams in Texas, Washington D.C.- Maryland- Virginia (DMV), Florida, Georgia, North Carolina and Tennessee hosted Advocacy Project webinars, symposia and conference presentations that reached approximately 544,910+ stakeholders.

who co-wrote the Bill and Melinda Gates op-ed, “From Achievement Gap to Opportunity for Learning: Equity Warriors as the Model for Teacher Leadership (Delta Teachers Efficacy).”

These forward-thinking DTEC-TAG Equity Warriors established Education Now! as the yearly theme and published a syllabus and primer that provided teacher efficacy and policy advocacy programming. These teams increased community education and awareness by holding forums—both virtual and in-person—for parents, administrators, and other community representatives to discuss issues and build an advocacy network. They also grew engagement via a quarterly newsletter and innovative social media campaigns including Back 2 School, #WeNeedBlackTeachers, Teach Appreciation, and Health and Wellness for Educators. They were able to grow followers and strengthen connections by following relevant hashtags such as #EducationNOW!, #equity, #teach, and #DTECTAG.

To meet the challenges of Black and Brown students returning to school after the COVID-19 pandemic, DTEC-TAG provided strategies and thought leadership on accelerating learning. These strategies were shared by Deanna Jackson DTEC-TAG Program Associate, and Kenya C. Ramey, DTEC-TAG Program Director,



Utilizing the “it takes a village approach,” DTEC-TAG encouraged participation in programs by growing partnerships and collaborations with national organizations including the American Federation of Teachers, the Congressional Black Caucus Foundation, The Center for Black Educator Development, the HBCU Consortium, The College Board, the National Association of Independent Schools, and the National Association of Black School Educators.

Starting with this fiscal year, the team’s presentations included “*Education Equity Warriors: We Who Learn, Teach*” at the DST National Convention on November 22, 2021, and at the Southern, Midwestern, and Eastern Regional Conferences, as well as at the National Education Symposium. DTEC-TAG also conducted quantitative and qualitative research, data analysis, and design to plan next steps. They formed an advisory council of educational policy experts and created a National Initiative Design to focus on the teacher shortage and retention crisis through professional development and a think tank for first to fifth year teachers in the current six geographical area. They also formed partnerships with Teacher Pre-Service, Training, Preparation, and Retention Programs, and HBCU Schools / Colleges of Education.

# Operations: Standing Firm to Advance the Mission of DREF

## REPORT FROM CHERYL M. THOMAS, EXECUTIVE DIRECTOR

This has been a very busy and rewarding year as the DREF staff maintained the daily operation of the Foundation to offer Charitable Engagement Service (CES) to Delta Sigma Theta Sorority, Inc., implement program initiatives and accomplish fund development goals. Since the onset of the pandemic in March 2020, our administrative staff continues to operate remotely. The staff has indeed been committed to “Standing Firm to Advance the Mission of DREF” by presenting new impactful program initiatives in health and education, developing new partnerships, and fulfilling staff positions. This year also brought the unique opportunity for the Foundation to engage with its key stakeholders (Delta members) at a national convention and several regional conferences—both confabs occurred in the same fiscal year.



Cheryl M. Thomas, CPA

## Charitable Engagement Service

A major portion of DREF’s daily operation involves providing Charitable Engagement Service to Delta chapters. The CES enables the chapters to receive charitable donations and it offers technical assistance to the chapters for their fundraising efforts, i.e. review of solicitation/sponsorship materials, review of grant proposals and special event productions, providing supporting documents needed, and other components of their fundraising campaigns. A majority of the Donor Funds at DREF have scholarship funds that are managed by the Foundation. During the 2021-22 fiscal year, 56 Delta chapters awarded \$635,521.97 in scholarships.

DREF facilitated fundraising needs for the Sorority’s 2021 national convention and several 2022 regional conferences, providing technical support and supporting documents to enable receipt of donations for charitable and educational programming.

## New Opportunities for Impactful Programming

This has been an exciting year with new opportunities and renewal of resources to continue major existing programs. Profound appreciation is extended to the Bill & Melinda Gates Foundation for awarding DREF another program grant to continue implementation of the Delta Teacher Efficacy Campaign (DTEC) and Teachers Advocating to lead Great (TAG) change. The Gates award funded the DTEC-TAG program from August 2021 through January 2023. I would also like to acknowledge that DREF received additional funding from the National Institutes of Health *All of Us* Research Program to continue as a National Community Engagement partner for Year-Five of DREF Research Matters. DREF also formed a new partnership this year with the American Pharmacists Association (APhA) Foundation to conduct Project IMPACT: Diabetes Prevention, an awareness and prevention campaign.

Project IMPACT is a year-long education and wellness program that will teach participants the skills they need to prevent type 2 diabetes, a disease that disproportionately affects African Americans. The IMPACT Diabetes classes are offered in-person and virtually throughout the nation. The APhA Foundation received a grant from the Centers for Disease Control and Prevention (CDC) to promote and facilitate enrollment in the CDC's National Diabetes Prevention Program.

## Greeting Our Constituents at National Convention and Regional Conference

DREF engaged in several program aspects of the 55th National Convention of Delta Sigma Theta Sorority, Inc. held November 19-22, 2021 in Atlanta, GA. DREF Board President Carolyn E. Lewis and I presented an update at a plenary session on the Foundation's program and research endeavors and current calendar of activities. The Foundation also presented two workshops on current initiatives: the Delta Teacher Efficacy Campaign (DTEC) and Teachers Advocating to lead Great change (TAG) and DREF Research Matters for *All of Us*. DREF also had three booths in the convention's Exhibit Trade Show: a general information display, another focusing on DTEC-TAG, and one on DREF Research Matters.

At the 2022 Regional Conferences, the Foundation presented workshops on collaborative programming. Entitled "DREF & DST Collaborating to Effectuate Community Empowerment," the workshop covered Project IMPACT: Diabetes Prevention, DREF Research Matters for All of Us, and the Delta Teacher Efficacy Campaign (DTEC)- Teachers Advocating to lead Great change (TAG).

## Welcome New Staff

In the fall of 2021, the Foundation hired several new staff members to fill vacant positions with the DTEC-TAG program and the DREF Research Matters for *All of Us*, and additional persons were hired in general staff positions; see listing below. Appreciation was extended to Ashley C. Daniels, who served as DREF Office Manager for nearly a decade; she resigned in July 2021 to accept a fellowship.

### DREF Staff for 2021-22

Cheryl M. Thomas, CPA  
EXECUTIVE DIRECTOR

Deborah Peaks Coleman  
DIRECTOR OF PROGRAMS

Tashyra Loynes\*  
PROGRAM SPECIALIST

Imani Drew\*  
OFFICE MANAGER

LaShawn Cook  
DONOR MANAGER AND FINANCIAL ASSISTANT

Freda Brown\*  
DONOR DATABASE CONSULTANT

Josephine Spurlock  
FINANCIAL CONSULTANT

Joyce Kilgore\*  
CHARITABLE ENGAGEMENT CONSULTANT

### DTEC-TAG

Kenya C. Ramey\*  
PROGRAM DIRECTOR

Deanna Jackson\*  
PROGRAM ASSOCIATE

### DREF Research Matters for All of Us

Alesha Russey, Ph.D.\*  
PROGRAM MANAGER

Marcia Johnson  
PROGRAM ASSISTANT

Rev. Kay Williams Dawson, DMin.\*  
COMMUNITY ENGAGEMENT COORDINATOR

Payton Terrell\*  
COMMUNITY ENGAGEMENT ASSISTANT

Cynthia Glenn-Cotton\*  
COLLEGIATE ENGAGEMENT COORDINATOR

Damarcus Haywood\*  
COLLEGIATE ENGAGEMENT ASSISTANT

*\*Asterik indicates staff person hired in 2021-22*

# 2021-2022 Financial Statement

## ASSETS

Cash and cash equivalents	2,427,540
Investments	6,011,755
Fixed Assets	9,429
Other Assets	364,393
<b>TOTAL ASSETS</b>	<b>8,813,117</b>

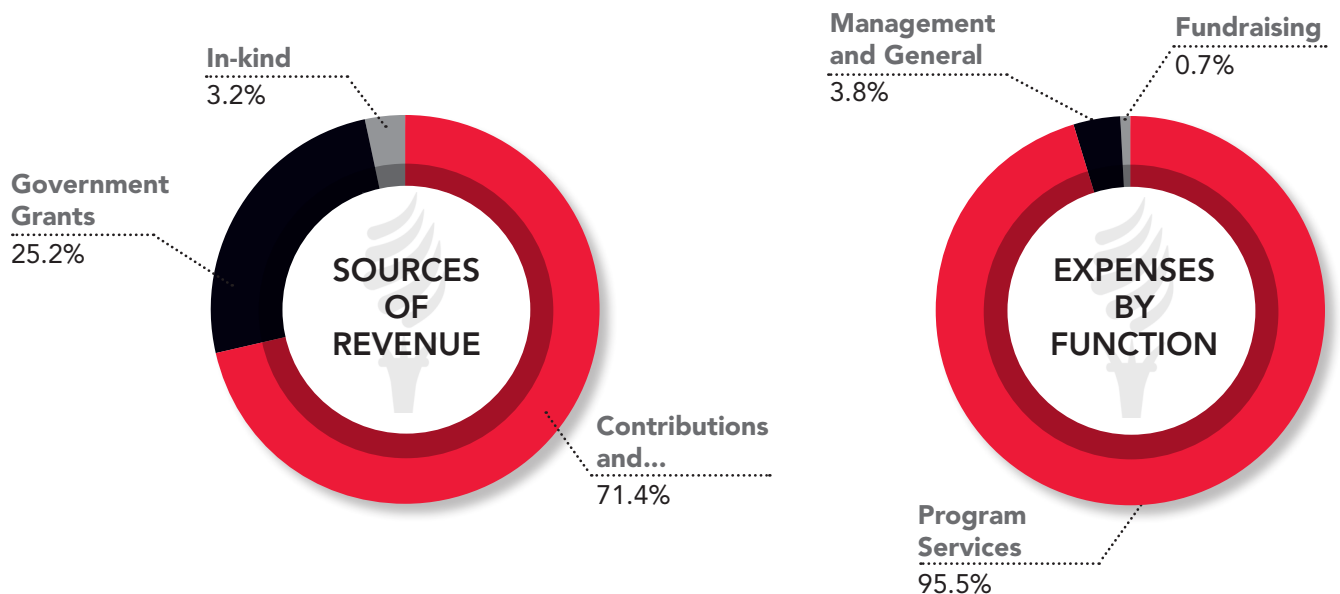
**TOTAL LIABILITIES** **\$171,410**

## NET ASSETS

Without Donor Restrictions	963,409
With Donor Restrictions	7,678,298
<b>TOTAL NET ASSETS</b>	<b>8,641,707</b>

**TOTAL LIABILITIES AND NET ASSETS** **\$8,813,117**

## STATEMENT OF ACTIVITIES





# 2021-2022 Donor Roll Call

## UNRESTRICTED DONORS

### VISIONARY DONOR \$100,000 AND ABOVE

Delta Sigma Theta Sorority, Inc.  
Alexis Enterprise LLC

### LUMINARY \$10,000 - \$24,999

Fidelity Charitable Fund  
The Benevity Community Impact  
Fund

### INNOVATOR \$5,000 - \$9,999

Keenya L. Graham  
Darylene S Harris  
Stephanie Nellons Paige

### CHANGE AGENT \$2,500 - \$4,999

Rhonda Arrington  
Doris Gray Brown  
Brenda Deal  
Tina Fernandez  
Michele Hagans  
Aysha Khoury  
Yaminah A. Leggett Wells  
Carolyn E. Lewis  
Shirley Norman Taylor  
Donata Ross  
Maxine White

### CATALYST \$1,000 - \$2,499

Janet Akers  
Krystal Alves  
Victoria Bark  
Victoria Barnes  
Susan Black  
Carin Boyd  
Leona Bridges  
Alisa Brooks  
Gloria Brooks  
Johnnie Brooks Booker  
Andrea Brown

Joan D. Brown  
Roslynn Cargile  
Josie Daniels  
Shawn Davis  
Phoebe B. Dixon  
Deborah Elam  
Shonnel Geary  
Teresa Harman  
Renee L. Harper  
Steven Hunter  
Leslie Howard  
Stephanie Jones  
Deborah Jones Buggs  
Gwendolyn King  
Brenda Lambert  
Cynthia Landrum  
Patricia Watkins Lattimore  
Rasheeda Liberty  
Nicole Lindsey  
Nigel Long  
Nicole Matthews  
Yanique Ollie Moore  
Rita Moss  
Fredric Navarre  
Suzanne Brown Peters  
Tonia Powell  
Joan Prince  
Louise A. Rice  
Diane Ridley  
Tchicaya Ellis Robertson  
Regina Rock  
Constance Y. Ross  
Cheryl M. Thomas  
Johnnie Turner  
Barbara Wilson  
Angela M. Williams  
Anjanette Wyatt

### ADVOCATE \$500 - \$999

Tonia Bickham  
Jennifer Bishop

Susan Black  
Lavonnie Brinkley  
Doris Brown  
Debra Bunkley  
Ophelia Chapman  
Vickie Colenburg  
Lisa Cook  
Nancy Cooke  
Lya Coulter  
Leslie Cousins Mond  
Barbara Crawley  
Beverly C. Daniel  
Jannette L. Dates  
Ida Dawson  
Gladys Deloney  
Atara Dorsey  
Tammy Dotson  
Bonita Edwards  
Gail Edwards  
Tekisha Everette  
Cecil Flamer  
Patricia France  
Doris Ford Poindexter  
Lois A Garland Patterson  
Kidada Gilbert Lewis  
Lou Gould  
Gioia Herring  
Tonya Horton  
Melva Housy  
Jacqueline Jackson  
Kimberly Johnson  
Sandra Phillips Johnson  
Alondra Jones  
Renee Shaw Jones  
Tracy Jones  
Roneal Josephs  
Alan King  
Lorraine Lee  
Sonya Lockett  
Valerie Lott  
Tamara Marshall

Christine Martin  
Shalanda Martin  
Janis Massey  
LaVerne Matthews  
Debra Clayton McAllister  
Robelyn McNair  
Jocelyn Merisca  
Pamela J. Middleton  
Joi Moore  
Rachael Murphy Humphrey  
Nancy Neal  
Karen Nelson  
Elizabeth R. Oates  
Lori Paschal  
Barvette Patterson  
Deborah Peaks Coleman  
Vanessa Pilate  
Marjorie Powell  
Pamela Pullen  
Laurie Reid  
Tiffany Riddick  
Yvette Robinson  
Akoss Schuppius Assane  
Lasaundra Scott  
Karen C. Somerville  
Deborah L. Stapleton  
Deborah Taliaferro-Holmes  
Nicole Taylor  
Julie Taylor Smith  
Angela Tilghman  
Deloris Turner  
Dorcas Washington  
Annie Whatley  
Mary M. White  
Monique S White  
Traci Williams  
Debra Williams  
Gloria Riddick Williams

**COLLABORATOR \$250 - \$499**

Nena Abdul Wakeel  
Sandy Adams  
Margaret Adams  
Dolores Addo  
Rosetta Armour-Lightner  
Shavon Arline-Bradley  
Patricia Ann Baines-Lake

Evelyn A. Baker  
Sonja Baker  
Maryka Baraka  
Anita Barksdale  
Rhonda Bass  
Juley Bates  
Valencia Bauswell  
Jane Beaird  
Darlene Bennett  
Deborah L. Bernal  
Roberta Berry  
Susan Black  
April Blair  
Barbara Brady  
Hazel Breland  
Dolores Brinkley  
Glenda Brinkley  
Evelyn Britton  
Wanda G. Brockington  
Sandra Brockington  
Jeri Brooks  
Andrea Brown  
Doris Brown  
Shirley Lewis-Brown  
Kira Bryant  
Sharon Barnett-Starks  
Alison Graves-Calhoun  
Stacey Callis  
Nancy Carpenter  
Pinkey Carter  
Josephine Chisom  
Sherre Collier  
Joy Calloway  
Elsie Cooke-Holmes  
Marvin Craig  
Denise Daniels  
Dorothy Colom  
Angela Dorsey  
Antoinette Dobson  
Edwena Durbar  
Zenia Fleming  
Zinga A. Fraser  
Sylvia Fuller  
Hermione Graham  
Emily Guss  
Meena Hall  
Sandra Harris

Jenna Hatton Cobb  
Jacqueline Hill  
Courtney Hendricks  
Christine Henry  
Cherie Hill  
Donna Hines  
Letitia Holloway  
Carolyn D. Jackson  
Terri Jackson  
Donnie James  
Judith Jenkins  
Mabeline Julien  
Crystal Kendrick  
Althea Kitchens  
Kathlean Kizzie  
Karen Little  
Tonya Lowe  
JoAnna Martin  
Qiana McNary  
Nikki Miller  
Janice Mitchell  
Elaine Mitchum  
Margaret Montgomery Richard  
Felicia Moore  
Maryann Perry  
Dionne Polite  
Xavier Richardson  
Diane Ridley  
Lynn Rose  
Eva Simmons  
Ursula Simmons  
Gillian Small  
Forrest Smith  
Jacqueline Smith  
Shenne Smith  
Cheryl Spain  
Gail Spann-Greer  
Karen Stanley  
Patricia Stevens  
Jeffrey & Nicole Tate  
Tiffany Thomas  
Marion Thornton White  
Lynette D. Thompson Brinson  
Sonya Whited  
Ruthie Wiley  
Gwen Williams  
Kimiyo Williams

## UNRESTRICTED CHAPTERS

### CATALYST \$1,000 - \$2,499

North Jersey Alumnae  
Albany (GA) Alumnae  
Federal City Alumnae  
Dallas Alumnae  
Phoenix Metropolitan Alumnae

### COLLABORATOR \$250 - \$499

Arlington (TX) Alumnae  
Burlington (NC) Alumnae  
East Point College Park (GA)  
Alumnae  
Ft. Washington Alumnae (MD) Alumnae  
Los Angeles Alumnae  
Memphis Alumnae  
Montgomery County (MD) Alumnae  
Nassau Alumnae  
New York Alumnae  
Norfolk (VA) Alumnae  
Oklahoma City Alumnae  
Orlando Alumnae  
Petersburg (VA) Alumnae  
Prince George's County (MD)  
Alumnae  
Queens (NY) Alumnae  
Salisbury (MD) Alumnae  
Sumter (SC) Alumnae  
Tuscaloosa (AL) Alumnae

### COMBINED FEDERAL CAMPAIGN (CFC) & WORKPLACE GIVING

Delores Ali  
Kaylie Anderson  
Karen M. Scarlett-Adams  
Janet Akers  
Deborah A. Allen Robinson  
Elizabeth Andrews  
Barbara L. Bagneris  
J. Latease Bailey-Close  
Tunya L. Bails  
Dorothy Baker  
Tanja Banks  
Sharon D Beard  
Krysta Beck

Charmaine Betty-Singleton  
Angela Billings  
Jennifer Bishop  
Renee Bishop-Sledge  
Susan Black  
Robin Blackmon  
Jamesia Blunt  
Nicole Bohannon  
Gloria Boone  
Carin Boyd  
Kandis Boyd  
Carin Boyd  
Elena Braithwaite  
Monica Brewer  
Karen Haskins-Brewer  
Joyce Broiles-Hill  
Shelise Brooks  
Crystal Brown  
Kristen Brown-LaPoole  
Stacey Bryant  
Alison Graves-Calhoun  
Sharon Carr  
Reginald Carr  
Kimberly Clark  
Germel Clarke  
Andrea Clerk  
Courtney Cola  
Schelli Collins  
Tiffany Comeaux  
Azalea Conley  
Jade Shepherd-Dabney  
Adrian Dance  
Shawn Davis  
Kimberly Davis  
Ebony Dennis  
Esmerelda Dickson  
Angela Dorsey  
Takesha Stokes-Dorsey  
Batisa Edwards  
Patrick Ellison  
Diane Epps  
Lorie A. Evans  
Latisha Falana  
Gloria Farris  
Chandra R. Felton  
Robin Ferguson

Courtney Fields  
Whitnee C. Fields  
Adrian Peterson-Fields  
McGraw Hill Financial  
Tanjaniika Fishburne  
Julie Fitzpatrick  
Aneesah Flagg  
Marquel Forbes  
Jennifer Franks  
Jennifer R. Franks  
Ray Frazier  
Jade A Fulce  
Glenda Gabriel  
Genee Gaither  
Johnnie C. Gales  
Kitara Garner  
Crystal Gathers  
Shonnel Geary  
Rosie Worles-Gentry  
Raynell George  
Arnette Georges  
Pia Gero  
Valtressia Givens  
Jacqueline Glanville  
Maryann L. Glass  
Dionne C. Godette  
Gisele Goff  
Jayne Gold  
Harold Goodridge  
Tiffany Joseph Goodson  
Christine S. Grant  
Darrian Gray  
Luciana Gray  
Felecia V. Green  
Michelle Mc Griff  
Ruby Griffin  
Linnet P. Griffiths  
Regenia Griswold  
Elizabeth Gunn  
Elizabeth L. Gunn  
Leslie Hagans  
Jerica Hamilton  
Kimberly Hamilton  
Jolene Hamm  
Erica Hanesworth  
Cassandra Miller-Hardwick

Andrea M. Harper  
Crystal Harris  
Darlene Harris  
Carina Harrison  
Robin Hart  
Zackulyn H. Hart  
Etta Hawkins  
Ericka Davis Haynes  
Chrystal D. Henderson  
Angela Perry-Hendrix  
Lisa Herbert  
Rosemary Smith Hickman  
Kelsey Hicks  
Janelle Hill  
Joyce Hobson  
Laverne Holland  
Charrise Hollingsworth  
Elise Holmes  
Cicely Hooten  
Monica A. Hopson  
Andree' Houston  
Keyrunta L. Houston  
Leslie Howard  
Cheryl Hudson  
Julie Hurd  
Latasha Hutson  
Deborah D. Ingram  
Jalence Isles  
Mina Issa  
Julie Simmons Ivy  
Julie Ivy  
Connie Jackson  
Margaret A. Moore-Jackson  
Carla Jackson  
Helen Jacobs  
Catina L. Jeffrey  
Junel Jeffrey  
Andria M. Jeffries  
Sheila Jenkins  
Lisa Jenkins  
Chele Taylor-Jennifer  
Kim E. Jennings  
Cryserica Jeter  
Amaris Johnson  
Crystal Johnson  
Tina Jolivet

Cecily Jones  
Stephanie Jones  
Tammy Jones  
A. K. Kennedy  
Tauriana Lyles King  
Erma Jean Smith-King  
Katrina King  
Ayoka Perkins-Knox  
Catherine Knox  
Stephanie Knox  
Kevin Korsh  
Adzoa Kwawu  
Stephen Kwong  
Barbara Lambert  
Brenda Lambert  
Cynthia Landrum  
Yolanda Lauderdale  
Toni T MC Lauren  
Goline Lawrence  
Jeanette D Lawson  
Monica T. Leach  
Ann-Marie Lee  
Angel Lessanu  
Michael Levin  
Erica Lewis  
Latisha Lewis  
Kendra L. Liddell  
Elizabeth Limbrick  
Ora Linen  
Athena C. Lock  
Dmitra Lofton  
Cheryl Long  
Janice Love  
Latesha Love  
Regina M. Lurry  
William Makell  
Mikal Malik  
Antoinette Mann  
Beverly Ann Marshall  
Paula Marshall  
Tianna J. Martin  
Apriel Powell Martin  
Ann Martin  
Irma J. Mason  
Nicole Matthews  
Patricia M Mayberry

LaSonia McBride  
Jacquelyn McClinton  
Farnese McDonald  
Trevy A. McDonald  
Princess Powell-McEvelley  
Michelle McGriff  
Launell McGuine  
Courtne McIntosh  
Kanika McKerson  
Toni McLauren  
Alaina R. McMurtry  
Deborah D. McNeil  
Felicia McPhail  
Tamika McPherson  
Ethel D. Means  
Lori Medina  
Wanda Michals  
Jennifer Miles  
Alisa Miliner  
Melissa Miller  
Lisa Miller  
Lucinda Mills  
Anita Montgomery  
Terra Moody  
Monica R. Moore  
Rebecca Morgan  
Bobbie Morrow  
Annetta Moses  
Carol Ann Moses  
June Moss  
Sam Mozelle  
Christine Munroe  
Joelle Hayes Murchison  
Melinda Murphy  
Renata Murray  
Tina Nelson  
Marietta D. Newman  
Colette T. Nichols  
Traci Pinkney-Nichols  
Alice Nodine  
Jennifer Norman  
Valeria Obi  
May C. Offutt  
Angela A. Owens  
Jyoti Pai  
Sheila C. Parker

Robert Perry  
D. Camilla Perry  
Sheldon Pine  
Zaneta R. Ponton  
Darleen M. Pope  
Melinda Pope  
DeLois Porter  
Cynthia Portis  
Tonia Jones Powell  
Kimberly A. Pratt  
Diedre Presley  
Dionne Price  
Joan Prince  
Kimberly E. Purifoy  
Yusuf Rahman  
Antonya P. Rakestraw  
Saranna T. Rankin  
Gail Ray  
Timothy Reading  
Joan Redd  
Kellyta Reives  
Serena Reshard  
Annie Rice  
Karlotta Richards  
Cheryl Richardson  
Shamese Richburg  
Anna Riley  
Simone Rixey  
Sharlene Roberson  
Karen Roberts  
Adriene Roberts  
Karen N. Roberts  
Euphrosyne Roberts  
Rhonda Robertson  
Sheila Robinson  
Selena Gilliam Robinson  
Regina Milteer-Rock  
Charisse Rodgers  
Tracey Rogers  
Dionne Rogers  
Debra Ross  
Vicki S. Royal  
Elisa Rae Rucker  
Laqueta Rumley  
Thomasina Sanders  
Henry Sanders

Marvia Sawyer  
Mauri Schoby  
Beverly Schulerbrandt  
Tamara Scott  
Frejeanne R. Scott  
Minnette Scruggs  
Arthurine Shackelford  
Kamili Shaw  
Tracy Sheppard  
Reginald Sherman  
Bettina Shuford  
Bettina C. Shuford  
Kelli Sibert  
Nekeshia G Simmons  
Yvonne Sims  
Nelda Smith  
Giovonni Smith  
Tonia Smith  
Rhonda Smith  
Sherrece Smith  
Constance P. Smith  
Sherrece Smith  
Alicia Smith-Freshwater  
Judy Smylie  
Natsha Snell  
Letita Snyder  
Yolanda Speed  
Brenda Stallworth  
Chelsea Smith-Standberry  
Veda S. Stanley  
Erica R. Stephens  
Trina Stewart  
Sharon R. Stokes  
Rolanda Stone  
Carol A Sumner  
Barbara Suplita  
Kasie Swayne  
Maria Swift  
Elan Taylor  
Dia Taylor  
Nicole Terry  
Tevlin Thompson  
Michael Thompson  
Kaneesa Tooson  
Monica Vereen  
Ashley F. Wade

Antionette D. Waits  
Linda T. Walker  
Dennis Wall  
Carol Wambeke  
Denice Clark Ware  
Evette Warren  
Melinda Washington  
Valerie Watkins  
Del Watson  
Shani Waugh  
Demetria L. Webster  
Sheree L. Welch  
Diane M. Ridley-White  
Daina White  
Deborah Wilburn  
Carol Wilkerson  
Lyla Wilkins  
Kerri Williams  
Wendy Williams  
Elise Sadler-Williams  
Andretta Williams  
Tamia Willis  
Chante Freeman Wilson  
Marica Woodham  
Alisa Moore-Woods  
Terrie Wright  
Geraldine Woodberry-Wright  
Daphne C. Wright  
Vanessa Wyche  
Renee Colleen Yancy  
Mitzi Young  
Chavonda Jacobs-Young  
  
Abbott Laboratories – EGC  
Aetna Foundation, Inc.  
Allstate  
Allstate Foundation  
Allstate Giving Campaign  
Altria  
America's Best Local Charities CCSF  
America's Charities  
Ameriprise Financial  
Aramark  
AT&T  
AT&T Employee Giving Campaign  
Bank of America Charitable Foundation

Benevity Community Impact Fund  
BMO Financial Group  
Boeing Company Employee Individual Giving Program  
Booz Allen  
Celeste Allen  
City of Orlando  
Coca-Cola Foundation Matching Gifts Program  
Community Health Charities  
CSAA Insurance Group  
CSX Transportation, Inc.  
Dell  
Enterprise Rent-A-Car Company of Rhode Island, LLC  
Environmental Federation of NC  
Estee Lauder Companies  
Fidelity Charitable Gift Fund  
Gates Foundation  
GE Appliances  
GE United Way Campaign  
Geraldine R. Dodge Foundation  
GivePlus Program  
GlaxoSmithKline Foundation  
Goldman Sachs Matching Gift Program  
HCA Caring for the Community  
HCA Foundation  
Heart of Florida United Way, Inc  
Honeywell International Charity Matching  
Huron Consulting Group, Inc.  
IBM Employee Services Center  
Intel Foundation  
Johnson & Johnson  
JP Morgan Chase  
KPMG Community Giving Campaign  
Lumen  
Macy's  
Merck Foundation  
Meredith Corporation Foundation  
Microsoft  
Microsoft Matching Gifts Program  
Morgan Stanley c/o CyberGrants Inc.

Nationwide Foundation c/o CyberGrants Workplace Giving Program  
Pfizer Foundation Volunteer Program  
PG&E Corporation Foundation  
Pledgeling Foundation  
Progressive Casualty Insurance Foundation  
Raytheon Technologies  
Razoo Foundation  
Shell Employee Giving Program  
Shell Oil Company Foundation Matching Gifts  
Silicon Valley Community Foundation  
State Farm Companies Foundation  
State Farm Mutual Automobile Insurance Company  
Strada Educational Network  
Synchrony Corporate Citizenship  
T. Rowe Price Foundation  
Texas License Plates  
The GE Foundation  
Travelers Community Connections  
Travelers Property Casualty  
Truist  
U.S. Bank Foundation  
UHG  
Union Pacific Fund for Effective Government  
United Health Foundation  
United Illuminating Company  
United Student Aid Funds  
United Way California Capital Region  
United Way of Central & Northeastern Connecticut  
United Way of Central Carolinas  
United Way of Central New Mexico  
United Way of Coastal Fairfield County  
United Way of Greater Houston  
United Way of Greater Philadelphia & SNJ  
United Way of Greater Richmond & Petersburg  
United Way of Greenville County, Inc.  
United Way of King County

United Way of Metropolitan Dallas, Inc.  
United Way of Midland County  
United Way of Monmouth County  
United Way of Monterey County  
United Way of North Central Florida  
United Way of Putnam County  
United Way of Rhode Island  
United Way of South Hampton Roads  
United Way of Southeastern Pennsylvania  
United Way of Tampa Bay  
United Way of the Bay Area  
United Way of the Bluegrass  
United Way of the National Capital Area  
United Way of the Virginia Peninsula  
United Way of York County  
United Way San Diego County  
UnitedHealth Group/Employee Giving Campaign  
Vanguard  
Veeva  
Walmart  
Wells Fargo Community Support Campaign  
Your Cause, Corporate Employee Giving Programs  
Your Cause, LLC Trustee for Medtronic Foundation Volunteer Grant Program  
Your Cause, LLC  
Your Cause, LLC Trustee for The HCA Foundation  
YourCause, LLC Trustee for ETS Cares Employee Donation  
YourCause, LLC for Hewlett-Packard  
YourCause, LLC for JC Penney  
YourCause, LLC or PWC LLP  
YourCause, LLC Trustee  
YourCause, LLC Trustee for AbbVie Employment Engagement Fund  
YourCause, LLC Trustee for Accenture LLP  
YourCause, LLC Trustee for Boeing  
YourCause, LLC Trustee for Duke Energy Foundation





CREATING POSSIBILITIES ...  
IMPROVING LIVES

1703 New Hampshire Avenue, NW  
Washington, DC 20009

T 202.347.1337


[www.deltafoundation.net](http://www.deltafoundation.net)

[info@deltafoundation.net](mailto:info@deltafoundation.net)

 [facebook.com/DREFPage](https://facebook.com/DREFPage)

 [twitter.com/DREF\\_1967](https://twitter.com/DREF_1967)

 [instagram.com/DREF\\_1967](https://instagram.com/DREF_1967)

 [www.linkedin.com/company/delta-research-and-educational-foundation/](https://www.linkedin.com/company/delta-research-and-educational-foundation/)

## In Appreciation

The DREF Board of Directors extends immense gratitude to Delta Sigma Theta Sorority, Inc. National President Elsie Cooke-Holmes, the National Executive Board, and the DST National Headquarters Staff. Sincere appreciation is also offered to all of our donors, volunteers, collaborative partners, and the DREF Staff.