

# STANDING FIRM

*Creating  
Possibilities  
to Improve Lives*

ANNUAL  
REPORT **2020**  
**2021**

- ▲ *Charitable Engagement Service*
- ▲ *DTEC-TAG*
- ▲ *DREF Research Matters for All of Us*
- ▲ *National Reading Circle*
- ▲ *Scholarships*
- ▲ *STJ Social Justice Institute*
- ▲ *The Center for Research on African American Women*

## VISION

The DREF vision is to create possibilities and improve lives.

## MISSION

The Delta Research and Educational Foundation (DREF) identifies issues affecting Black women, their families, and communities of the African Diaspora globally, and creates solutions through research, programming, and funding in support of charitable and educational programs of Delta Sigma Theta Sorority, Inc. and other collaborative organizations.



▲  
DREF Board of Directors (as of June 30, 2021)

### OFFICERS

Carolyn E. Lewis, MBA, President  
Constance Y. Ross, Esq., Vice President  
Deborah A. Jones-Buggs, Secretary  
Renee L. Harper, Treasurer

### MEMBERS

Beverly E. Smith  
*National President & CEO  
Delta Sigma Theta Sorority, Inc.*  
Johnnie Brooks Booker  
Leona M. Bridges  
Doris Gray Brown  
Diamond Compton  
Josie V. Daniels, PharmD.  
Doreen Dixon  
Michele V. Hagans  
Teresa D. Harman, CPA  
Steven V. Hunter, Esq.  
Pat Hurlock  
Andria Jeffries

Nigel W. Long, Esq.  
Yanique O. Moore  
Stephanie Nellons Paige  
Suzanne Brown Peters  
Joan M. Prince, PhD.  
Xavier Richardson  
Tchicaya Robertson, PhD.  
Larry P. Suarez  
Angela M. Williams  
Anjanette Wyatt, PharmD.

### EX-OFFICIO MEMBERS

Cheryl M. Thomas, CPA  
DREF Interim Executive Director  
Dorcas Washington  
*Acting Executive Director  
Delta Sigma Theta Sorority, Inc.*  
Patricia W. Lattimore  
*DREF CEO, served until December 2020*  
Lois E. Bingham, Esq., *Executive Director  
of DST Sorority, served until April 2021*

## Message from the President

We deeply appreciate your stalwart support, which has helped us to thrive despite the challenges of these uncertain times. Thanks to you, we are Standing Firm to Advance the Mission of DREF through our initiatives to support African American women and families. We have continued to adapt to the shifting realities of the COVID-19 pandemic by offering virtual programming and enabling our staff to work remotely.

In this Annual Report, you will learn about the wonderful progress that has taken place during the 2020-21 fiscal year. As always, we embrace change. In January of 2021, we welcomed Cheryl M. Thomas, CPA, to serve as DREF Interim Executive Director. She brings outstanding expertise and leadership in management, accounting, and finance. Ms. Thomas has previously served as a Financial Consultant for DREF and brings extensive non-profit experience, having served many organizations.

Our commitment to quality research and education continues to thrive. I am pleased to report that we were able to maintain funding for DTEC-TAG and DREF Research Matters for *All of Us*—two areas of great focus and priority that keep us Standing Firm.

As part of DREF's commitment to giving, we continued our support to Chapters through Charitable Engagement Services; provided funding to several DST Chapters through Community Empowerment Grants; and awarded internship, fellowship, and scholarship opportunities.

In an age where communication is more vital than ever, we expanded our social media presence. This enabled

us to connect and engage with donors and supporters like you spontaneously and in real time, for which we are extremely grateful.

I am delighted to share that our 2020-21 Vivian A. Ware Research Fellow, Takeia Anthony, Ph.D., is researching and documenting DREF's legacy with a written history and an online archive. Many thanks to you who have granted interviews for this important project.

It is my pleasure to acknowledge the continued excellence of the DREF Board and Staff whose contributions exemplify the excellence and integrity for which we are known. I want to add a very special thanks to our outgoing Board members whose service has been so instrumental in our growth and progress. I also extend a warm welcome to our new Board members—we look forward to seeing what we can achieve together.

In closing, I want to thank every one of our donors. You are essential to our work in Standing Firm to Advance the Mission of DREF. Thanks to your investment in the Foundation, we have not only weathered the pandemic but are continuing to reach and engage thousands of African American women and their families. We appreciate your generous responses to our call and your investments in our mission. DREF's achievements, accomplishments and successes are yours to share and celebrate. Please know how much we value you and all that you contribute to DREF.

Sincerely yours,



Carolyn E. Lewis, MBA  
President



Carolyn E. Lewis

*“I want to thank every one of our donors. You are essential to our work in Standing Firm to Advance the Mission of DREF.”*

*The use of technology enabled DREF to present its major fundraising events in the form of special events, outreach on social media, and direct solicitation.*

## Fund Development

### Introduction

The Delta Research and Educational Foundation (DREF) continues to implement a multi-faceted approach in its philanthropic endeavors. As professional and social environments continued to operate remotely during the pandemic, the Foundation relied more heavily on technology to conduct its fundraising activities. The use of technology enabled DREF to present its major fundraising events in the form of special events, outreach on social media, and direct solicitation. This fiscal year, Fund Development activities have also included traditional streams of charitable giving: Workplace Giving, special occasions, grant awards, and stewardship from the DREF Board of Directors. Thank you to all contributors who answered the call to support the Foundation's fundraising campaigns.

### Special Events

DREF kicked off the fiscal year with a major fundraising special event on August 22, 2020—The Hot Summer FUNraiser, a virtual Party with a Purpose. With music by noted DJ Vince Adams of Chicago, guests logged on for a Saturday night house party tempo. As guests enjoyed the dynamic party music they generously made online donations, resulting in \$65,000 being raised for DREF operations and charitable and educational programming. The Hot Summer FUNraiser, held in August, coincided with the annual observance of Black Philanthropy Month. DREF integrated the Black Philanthropy Month theme, "I am A Philanthropist" into its fundraising strategy and party goers embraced it and created a momentum for charitable giving to support the Hot Summer FUNraiser.

### DREF Standing Firm for Clean Hands Campaign

In September 2020, DREF launched its **Standing Firm for Clean Hands Campaign**, using its ever-popular hand sanitizer as the giving incentive. The Foundation created the Clean Hands Campaign in response to the need for constant handwashing to prevent the spread of the Coronavirus. DREF supporters were asked to donate and receive a bundle of hand sanitizers that they would share with non-profit organizations (daycare centers, schools, homeless shelters, other) or donate to first responders. For donors contributing \$125 or more, they would receive a quantity of 25 hand sanitizers. DREF raised \$9,140.00 and approximately 1,300 hand sanitizers were distributed. The Clean Hands Campaign continues.



### Giving Tuesday—Annual Day of Philanthropy

DREF conducted an aggressive social media campaign throughout the month of November to promote Giving Tuesday, the annual day of philanthropy that occurred on December 1, 2020. Frequent promotional announcements were posted on Twitter, Facebook, and Instagram. The



concerted efforts of the DREF Board, staff, volunteers and public relations counsel resulted in \$30,000 being raised. Special thanks to Delta Sigma Theta Sorority, Inc. for encouraging Delta members to give through a special direct appeal from National President Beverly E. Smith.

### **Mother’s Day Roses & Violets Campaign**

A rose, in its many splendid colors, beauty, and sweet fragrance, symbolizes the regard that persons have for their mothers—unconditional love, utmost respect, and profound appreciation. Another coveted flower, the violet signifies everlasting love, faith, and loyalty—attributes characteristic of mothers. In recognition of beloved mothers and special mother figures, DREF collaborated once again with Delta Sigma Theta Sorority, Inc.’s Strategic Partnership Task Force to present the DREF Roses & Violets Charitable Campaign, a charitable giving effort to benefit the work of



the Foundation. The Campaign ran from April 9 through May 7, 2021 and employed the theme: A Mother’s Love Creates Possibilities. Persons were invited to make a donation in honor or in memory of their mothers.

DREF supporters saluted their moms, godmothers, stepmothers, village moms, play mothers and other mother figures in their lives. The contributors were given a Roses & Violets thematic certificate on which they could include a personal message for presentation to their mothers. For memorial tributes, the donors received an original poem written by celebrated poet Gillie Haynes of Maryland. The Roses & Violets Campaign raised \$28,146.

### **More Ways of Giving Workplace Giving**

In addition to online giving opportunities and special events, DREF has received significant support from the Combined Federal Campaign (CFC) and other Workplace Giving resources. The CFC enables federal employees to contribute to DREF with ease and consistency via automatic payroll deduction. Several state employers also offer automatic payroll deduction for charitable causes. The private sector also offers Workplace Giving opportunities that often include matching gifts. See Workplace Giving Donors listed in this year’s Donor Roll at end of this report.

### **Retail Opportunities and Special Occasions**

DREF participates in the online Amazon Smile charity initiative. Shoppers who have enrolled in the Amazon Smile Foundation’s charitable giving program and designated DREF as their selected non-profit, generate charitable funds for the Foundation with each purchase made. Birthdays are for celebrating and supporting DREF. A sincere note of gratitude is extended to DREF supporters who have raised funds for DREF this fiscal year in honor of their birthdays and for shopping Amazon with DREF benefitting.

*DREF supporters saluted their moms, godmothers, stepmothers, village moms, play mothers and other mother figures in their lives.*



# Community Empowerment Grants

## 2020-2021 COMMUNITY EMPOWERMENT GRANT AWARDEES

1. Anderson (SC) Alumnae
2. Austin (TX) Alumnae
3. Decatur (GA) Alumnae
4. Eastern Panhandle (WV) Alumnae
5. Fayetteville (NC) Alumnae
6. Foothill (CA) Alumnae
7. Gamma Psi (Tougaloo College)
8. Gwinnett County (GA) Alumnae
9. Harrisburg (PA) Alumnae
10. Hawaii Alumnae
11. Houston (TX) Metropolitan Alumnae
12. Huntington (WV) Alumnae
13. Indianapolis (IN) Alumnae
14. Lancaster (CA) Alumnae
15. Long Beach (CA) Alumnae
16. Marietta-Roswell (GA) Alumnae
17. Metropolitan Dallas (TX) Alumnae
18. Miami (FL) Alumnae
19. Norfolk-Plymouth (MA) Alumnae
20. Orlando (FL) Alumnae
21. Quaker City (PA) Alumnae
22. Raleigh (NC) Alumnae
23. St. Petersburg (FL) Alumnae
24. Tampa (FL) Alumnae
25. Waukegan (IL) Alumnae
26. Warner Robbins (GA) Alumnae
27. Waterloo (IA) Alumnae
28. Youngstown (OH) Alumnae

### Gun Violence Prevention ▲ Voter Registration/Education ▲ U.S. Census

For the first time since establishing the Community Empowerment Grantmaking Program more than a decade ago, DREF asked Delta chapters to focus its program grant requests on a specific issue. The Foundation identified the following concerns as vitally important to be addressed by Delta chapters in their local communities: Gun Violence Prevention, Voter Registration and Voter Education, and the U.S. Census.

Based on the alarming number of shootings in America and a research project conducted by the DREF Sisters Scholars Advisory Council, the need to prevent gun violence via community programming was paramount. The research project conducted by the Sister Scholars confirmed that gun violence is an everyday stressor in the Black community and Black women are three times more likely than Caucasian women to be murdered by a gun. Additionally, by awarding program grants to address voter registration and voter education topics regarding the 2020 general election, chapters were able to engage community residents as well as register voters and transport voters to the polls. Delta chapters were also encouraged to conduct outreach campaigns for the 2020 U.S. Census to ensure that all individuals in their communities were counted.

### Quaker City Alumnae Presents Gun Violence Awareness Summit: "Put the Jawns Down"

Quaker City Alumnae Chapter of Philadelphia, PA received a Community Empowerment Grant to address gun violence prevention in their city. In June of 2021, the



▲ Pennsylvania State Representative Jordan Harris collaborated with Quaker City Alumnae on the Gun Violence Awareness Summit.

Chapter presented a weeklong gun violence awareness campaign that included social media messaging and a virtual summit. On June 4-9, 2021, video messages of hope and empowerment featuring community leaders, influencers, and victims of gun violence were presented on the Chapter's social media platforms. Approximately 1,711 viewers accessed the messages and nearly 100 persons attended the culminating virtual summit.



The Chapter donated a \$150 voucher for mental health session(s) to a gun violence survivor and \$250 to the local advocacy group Mothers-in-Charge that provides counseling and grief support to individuals and families affected by violence. Program participants included community leaders and elected officials: G. Lamar Stewart (Community Engagement Chief), Destiny Jackson, Attorney Michael Coard, Escamillio D. Jones (Licensed Funeral Director), and PA State Representative Jordan Harris. The Gun Violence Awareness Summit was coordinated by the

Physical and Mental Health Committee; Shawn Anthony is Chapter President of Quaker City (PA) Alumnae.

### Lancaster (CA) Alumnae Gets out the Vote

The Lancaster (CA) Alumnae Chapter, located in the Antelope Valley region in northern Los Angeles County, used its Community Empowerment Grant funds to conduct a two-part voter education initiative. The Chapter presented a voter education workshop and engaged an ATVA bus to travel with voting advertisements on the back of the bus. The Chapter reported that a 22% increase occurred in the number of registered voters between 2016 and 2020.

The voter education workshop and bus advertisements aimed to educate underserved populations in the Antelope Valley communities, making a special effort to reach youth in foster care. The workshop provided key election dates (i.e. registration deadlines, balloting dates, other)



▲ Bus traveled throughout Antelope Valley promoting voting registration.

The ATVA buses carrying the Lancaster (CA) Alumnae billboard ads traveled a 70-mile route on California State Highway 14 circulating throughout Antelope Valley communities, an area that constitutes the western tip of the

Mojave Desert. The Chapter's Social Action Committee coordinated the voter education initiative. Diana Wallace Hom is Chapter President of Lancaster(CA) Alumnae.

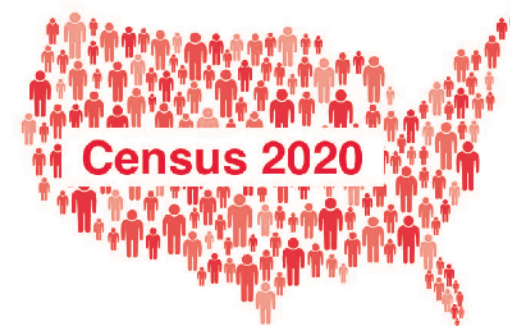
### Waterloo (IA) Alumnae Conducts 2020 Census Inclusion: Everyone Counts

The Waterloo (IA) Alumnae Chapter received Community Empowerment Grant funds to conduct outreach and awareness for the 2020 United States Census, a national survey presented every ten years to count the population for taxation and political representation. The Chapter's initiative was entitled "2020 Census Inclusion: Everyone Counts." The original intent of their program was to provide awareness on the importance of the Census to Hard-to-Contact (HTC) households in the African American community that had difficulty completing the Census form.

The mayor of Waterloo, Quentin Hart appealed to the Delta chapter to broaden their outreach to include two additional HTC demographics. The Chapter increased its outreach effort to include the additional communities that were traditionally Hard-to-Contact, presenting town hall forums where it was explained that an accurate Census count of households significantly affects the funding from the federal government for new schools, transportation and other resources. The Chapter provide multiple devices for families to complete the form, i.e. laptop, mobile phone, or paper form.

The Chapter's Social Action Committee coordinated the "Everyone Counts" outreach campaign and collaborated with the Eta Gamma Gamma Chapter of Omega Psi Phi Fraternity, Inc., the Multicultural Student Organization of Hawley Community College, MidAmerican Energy, and Mayor Hart and the City of Waterloo. Rhonda McRina is Chapter President of Waterloo Alumnae.

*“An accurate Census count of households significantly affects the funding from the federal government for new schools, transportation and other resources.”*



# Scholarship Awards



Lailah Hall, Florida A&M University



Cameren A. Williams, Juilliard School

## NIDA EDNA HARRIS VITAL SCHOLARSHIP FUND



In March 2021, Dr. Carlos Vital presented a \$14,000 donation to New Orleans Alumnae for a scholarship fund to be established at the Delta Research and Educational Foundation in memory of his mother, the late Nida Edna Harris Vital, a chapter member. Mrs. Vital was initiated in the spring of 1958 at Delta Pi Chapter on the campus of Jackson State University in Mississippi. During her life journey, she was a civil rights and political activist, teacher, and instructor at Dillard University. The former Vice President of Programs of New Orleans Alumnae Chapter was also an entrepreneur.

The New Orleans Alumnae Chapter President Linda Howard-Curtis and DREF Board President Carolyn E. Lewis extended their appreciation to Dr. Vital for his generous donation, memorializing his mother's legacy and commitment to DST and to the community.

During the 2020-21 fiscal year, DREF awarded the Oleta Lawanda Crain Scholarship, the Ruby Dee Legacy of Sisterhood Scholarship for the Arts, and received funding to create a new scholarship fund in memory of Nida Edna Harris Vital. The Foundation currently manages Donor Funds for 300 plus chapters of Delta Sigma Theta Sorority, Inc. and special entities (individuals, families, DST membership lines, other) that award scholarships to students throughout the nation. This fiscal year, DREF awarded \$367,543 in scholarships for funds that it manages.

## The Oleta Lawanda Crain Scholarship

The Oleta Lawanda Crain Scholarship was awarded to Lailah Hall, a student at Florida A&M University, who is majoring in agri-business. Ms. Hall came to FAMU from St. Louis, MO. She is excelling in her academic studies and assuming leadership in several campus organizations. She is a student member of the Florida Farm Bureau, the National Council of Negro Women, and serves as a Cengage Student Ambassador. The Crain Scholarship Awardee is a member of the Student Government Association's Activity & Service Liaison Committee and she was selected to attend the 2021 Agriculture Future of America Leadership Conference.

The Oleta Lawanda Crain Scholarship is offered to female high school graduates, enrolling in a Historically Black College and University (HBCU) and the student must reside in Colorado, Missouri, or Oklahoma. The applicant must have a 3.0 grade point on a 4.0 scale and have provided service to her community. Ms. Hall received a \$2,000 scholarship.

## The Ruby Dee Legacy of Sisterhood Scholarship for the Arts

Ms. Cameren A. Williams, a music major at the Juilliard School, is the 2020-21 recipient of the Ruby Dee Legacy of Sisterhood Scholarship for the Arts. A native of West Palm Beach, FL, Ms. Williams' study of concentration is viola performance. She was the principal violist of the Youth Orchestra of the Palm Beach County Philharmonic Orchestra, principal violist in the New World Symphony Side-by-Side Orchestra and co-principal violist of the Principal Orchestra of the Florida Youth Orchestra. She was also the assistant principal in the Aspen Philharmonic Orchestra, a member of the New York String Orchestra under the direction of Maestro Jaime Laredo, and she is a member of the National Youth Orchestra of the United States of America under the baton of maestro Michael Tilson Thomas. Ms. Williams currently performs with The Soulful Symphony and The Juilliard Orchestra. She studies under the tutelage of Professor Carol Rodland.

The Ruby Dee Legacy of Sisterhood Scholarship for the Arts is made possible by a generous donation to DREF from Dr. Francene Breakfield and L. Denise Wells, longtime members of Delta Sigma Theta Sorority, Inc. and the co-authors of An Anthology of Sisterhood. The merit-based scholarship is awarded annually to a deserving African American female student who is either a junior or senior collegiate or a graduate student majoring in English, Literature, Drama, Art, Music, African American Studies, Communications, Education, Fine Arts, Performing Arts, Visual Arts and preferably living or attending school in the Sorority's Eastern or Southern Region. Ms. Williams received a \$1,000 scholarship award.



# DTEC-TAG Equity Warriors for Education



DREF's Delta Teacher Efficacy Campaign (DTEC) and its companion initiative Teachers Advocating to Lead Great Change (TAG), launched a new summer instructional program in the summer of 2020 to help parents, teachers and leaders better understand and utilize digital platforms to actively engage students of all ages.

This new program, entitled H.E. LIVE Summer Learning Series, brought together master teachers, parents, and education advocates to provide solutions in response to the disruption of the COVID-19 pandemic. The H.E. LIVE Lessons varied by topic, grade level and audience, with discussions covering instruction, policy and distance learning strategies free of charge to students, teachers, parents, district administrators and other community stakeholders.

A team of four trained teachers and educational advocates called TAG Equity Warriors led the content creation for the LIVE Lessons program: Kieshla Wylie, Levatta D. Levels, Simene Walden and Isis Spann.

These dynamic TAG Equity Warriors exemplified education advocacy in their local communities through education and awareness. TAG is an extension of the advocacy prong of the Delta Teacher Efficacy Campaign (DTEC), a national program that focuses on such topics as culturally relevant teaching, social emotional learning, trauma-informed classrooms and the whole child. They work tirelessly to eliminate equity disparities within educational system by providing information,

research and resources to students, teachers, parents, administrators and the communities through education, awareness and professional development activities.

DTEC-TAG operates in six regions: the Washington, D.C., Maryland and Virginia area, Texas, Florida, Georgia, North Carolina and Tennessee.

The DTEC-TAG "Pandemic Pivot" created partnerships with the National Pan-Hellenic Council (NPHC)/Black Greek Letter Consortium (BGLC) and DREF Research Matters in a month-long series entitled Rooted in Research. The series reached over 250,000 community members and educators, many of whom continue to utilize the series content.

Rooted in Research 2.0 streamed live every Saturday in April 2021 with episodes including:

- ▲ Rooted in Faith, featuring the Modern Christian Family
- ▲ Rooted in Culture, featuring the NPHC Divine 9 Presidents and National Undergraduate Leadership Culture playing #CultureTags™
- ▲ Rooted in Education, featuring the DTEC-TAG Equity Warriors and other experts
- ▲ Rooted in Rhetoric, featuring HBCU Speech and Debate Team

The educational symposium Rooted in Education: Sowing Seeds to the Heart, featuring keynote speaker Dr. Paulette C. Walker, 25th National President of Delta Sigma Theta Sorority, Inc., also streamed live in April and can be viewed on YouTube.

DTEC-TAG has received a commitment of \$250,000 for funding to continue programming for the 2021-22 Fiscal Year. This will enable the program to expand from six areas of the country to eight in the new program year. DTEC-TAG is made possible by a generous grant from the Bill and Melinda Gates Foundation.



*This new program, entitled H.E. LIVE Summer Learning Series, brought together master teachers, parents, and education advocates to provide solutions in response to the disruption of the COVID-19 pandemic.*



▲ Dr. Paulette C. Walker, Presenter, Rooted in Education "Sowing Seeds to the Heart"

## Year 4—Moving Forward with DREF Research Matters for All of Us



DREF is committed to educating African Americans about the vital need to take part in biomedical research as a part of reducing health disparities. This was the fourth year of the awareness campaign “Research Matters: Creating Possibilities to Achieve Health and Wellness for *All of Us*” Program funded by the National Institutes of Health (NIH). The ultimate objective is to enroll African Americans in the NIH national registry to create a database that includes their engagement as potential participants in clinical trials. African Americans continue to have the highest incidence, prevalence, and mortality rates from chronic diseases, such as cardiovascular disease, diabetes, obesity, hypertension, mental health, and HIV/AIDS, yet they contribute to only five percent of clinical trial participants in America.

Working in collaboration with Delta Sigma Theta Sorority, Inc. (DST), and the National Council of Negro Women (NCNW), DREF has helped to ensure that more than 296,000 participants are fully enrolled in the research process, and that 407,000 have completed the consent process. More than 650 research projects are using data from *All of Us* to help make biomedical research more diverse, inclusive, and representative.

In early 2020, the DREF Research Matters team made the pandemic pivot from in-person events to multiple program elements available on digital platforms. The expanded reach of these virtual presentations invited community members to take part in dialogues about developmental habits and ideas that encourage African Americans to lead healthier,

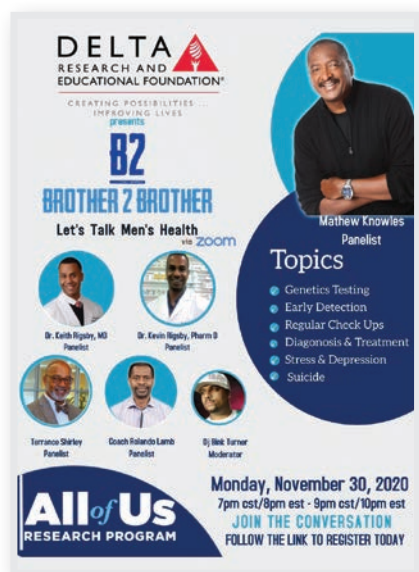
more balanced lives. Many notable African American professionals, physicians, performers, researchers, sports figures, and others joined these presentations to help spread the health-conscious messaging.

This created messaging opportunities that the DREF Research Matters team and collaborators expanded throughout the award period. During FY 2020-21, DREF Research Matters for *All of Us* reached more than 437,000 people through 307 engagement events and social media. Major achievements during this period include developing partnerships with HPO and DV sites and successfully recruiting and training 12 Citywide Coordinators who helped to cultivate presentations and partnership opportunities with those sites. Accomplishments also include:

- ▲ holding virtual Research Accelerates Progress (R.A.P.) Sessions on 15 HBCU campuses
- ▲ appointing 8 DREF Research Matters Special Project Ambassadors
- ▲ continuing to build partnerships and events in 22 cities
- ▲ expanding the DREF Research Matters for *All of Us* Operational Team from 3 to 10 and
- ▲ growing representation and participation in the Underrepresented in Biomedical Research (UBR) Project.

The DREF team presented on Mental Health, Men’s Health and Alzheimer’s through social media campaigns. Additionally, a partnership was formed with Reach Media—producers of the “Rickey Smiley Morning Show” and the “Willie Moore, Jr. Show” to feature DREF Research Matters for *All of Us* for a nationally syndicated radio and digital campaign.

Thanks to its continued progress, DREF Research Matters received funding in mid- 2021 of more than \$900,000 to continue its DREF Research Matters program for a fifth year to expand its outreach efforts.



# The Center for Research on African American Women

## Introduction

The Sister Scholars Advisory Council continues to guide and provide counsel for the educational and research endeavors of the Center for Research on African American Women. The program agenda for this fiscal year included selection of the Vivian A. Ware Research Fellow, the reinstatement of the National Reading Circle, and the annual presentation of the Stephanie Tubbs Jones Social Justice Institute initiatives.

## Vivian A. Ware Research Fellow Writes the History of DREF



Takeia Anthony, Ph.D.  
African American Women.

Dr. Anthony is an Associate Professor of History at Kentucky State University. Her areas of expertise are Mobilized African Diaspora and Archiving. A member of Delta Sigma Theta Sorority, Inc., she has curated the archival records of the James Weldon Johnson Branch (Jacksonville, FL) of The Association for the Study of African-American Life and History (ASALH). Dr. Anthony

The Vivian A. Ware Research Fellow Selection Committee unanimously selected Takeia Anthony, Ph.D., as the 2020-2021 Ware Research Fellow. As this year's Ware Fellow, Dr. Anthony is charged with writing the Foundation's history and establishing an online repository for The Center for Research on

has published several articles, book chapters, and a historical spoken word album titled Dr. TaKeia Speaks: The Inception.

She is a native of Bowling Green, Kentucky where she is the first African-American woman to earn a Ph.D. in history. She is an alumna of Howard University in Washington D.C. and North Carolina Central University (NCCU).

The Vivian A. Ware Research Fellowship Selection Committee was comprised of DREF Board Vice President and Sister Scholar Constance Y. Ross, Esq. DREF Board member Joan M. Prince, Ph.D., and Sister Scholar Yarbrah T. Peeples, Ph.D.

## The DREF National Reading Circle Returns

The DREF National Reading Circle (NRC), an educational endeavor of the Sister Scholars Advisory Council, was re-instituted in 2021. The NRC encourages a national audience to read primarily scholarly works published by African American women authors. The highly acclaimed book, *Caste: The Origins of our Discontents*, by award-winning journalist Isabel Wilkerson was selected as the 2021 reading choice. Nearly 300 persons participated in the book discussion of *Caste* held March 27, 2021.

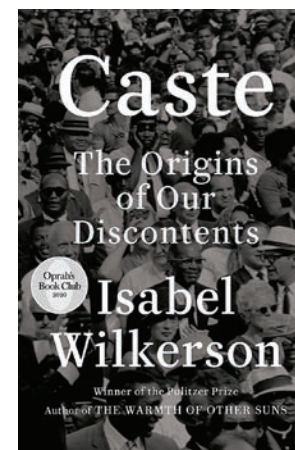
The book discussion was facilitated by Tchicaya Robertson, Ph.D., DREF Board Member and Sister Scholar, and guest scholar Maya Rockey Moore Cummings, Ph.D., President of Global Policy Solutions.

An additional educational activity included the Sister Scholars Advisory Council creating a summer and winter reading list. The list of recommended books was promoted on DREF social media platforms and was a regular feature on the Foundation's website.

## SISTER SCHOLARS ADVISORY COUNCIL

- Sharon Barnett-Starks, MSW
  - Wanda G. Brockington, Ph.D.,\*  
Norfolk State University
  - Elizabeth Clark-Lewis, Ph.D.,  
Howard University
  - Pearl Ford Dowe, Ph.D.,  
Emory University
  - Zinga Fraser, Ph.D., Brooklyn College
  - Paula J. Giddings,\* Smith College
  - Keneshia Grant, Ph.D.,  
Howard University
  - Kandace G. Hinton, Ph.D.,  
Indiana State University
  - Mary Howard-Hamilton, EdD.,  
Indiana State University
  - Nikisha Horn, MBA
  - Carolyn E. Lewis, DREF Board  
President/Chair, SSAC
  - Claudia Nelson, Ph.D.,  
Coppin State University
  - Tchicaya Robertson, Ph.D.
  - Constance Y. Ross, Esq.
  - Crystal Shelby-Caffey, Ph.D.,  
Southern Illinois University
  - Marion White, MSN, BSN, RN
- \*Retired

Staff Liaison: Deborah Peaks Coleman,  
Director of Programs





**Stephanie Tubbs Jones Social Justice Institute  
STJ Annual Forum-- Standing Firm with Our Sister Mayors:  
Creating Solutions to Crises**

The Annual Stephanie Tubbs Jones Social Justice Forum presented by DREF at Delta Day's in the Nation's Capital (April 2021) featured conversations with four African-American women mayors, employing the theme "Standing Firm with our Sister Mayors: Creating Solutions to Crises." The following mayors participated: Keisha Lance Bottoms of Atlanta, Sharon Weston Broome of Baton Rouge, LaToya Cantrell of New Orleans, and Vi Lyles of Charlotte. STJ Forum moderator Tracee Wilkins of (NBC News 4) and DREF Sister Scholar Wanda G.

panelists: Nadia E. Brown, Delta member and professor of government at Georgetown University (then at Purdue University) and Sharon Austin, professor of political science at the University of Florida. The forum was designed to hear concerns and needs of the cities represented and encourage audience members to volunteer with local municipalities to Stand Firm with the mayors.

**2021 STJ Summer Internship**

Tyshara Loynes, a recent graduate of the University of Indianapolis, was selected as the 2021 Stephanie Tubbs Jones (STJ) Summer Intern. The STJ Summer Internship Program for minority women is a collaboration between DREF and the Congressional Black Caucus Foundation, Inc. (CBCF) Internship Program. The internship was a remote work experience with her assigned to the office of Congresswoman Joyce Beatty's (D-OH).



▲ Tyshara Loynes

The nine-week internship offered Ms. Loynes a stipend, leadership development webinars, and personal development activities. Ms. Loynes describe her passions as being political public relations and community engagement. She served in a variety of leadership roles while a collegiate student, including president of the Circle City Pan Hellenic Council and chapter president of the Chi City-wide Chapter of Delta Sigma Theta Sorority, Inc.

The Delta Research and Educational Foundation established the Stephanie Tubbs Jones Institute for Social Justice in 2008 to perpetuate the extraordinary life, leadership, and legacy of the late Congresswoman Stephanie Tubbs Jones, (1949-2008), a Democrat who represented Ohio's 11th Congressional District. The internship is made possible by a generous donation from the Hillary and Bill Clinton Foundation and the Michele Hagans Foundation.



▲ Keisha Lance Bottoms, Mayor of Atlanta



▲ Sharon Weston Broome, Mayor of Baton Rouge



▲ LaToya Cantrell, Mayor of New Orleans



▲ Vi Lyles, Mayor of Charlotte

Brockington, Ph.D., interviewed the mayors individually and posed questions related to how their cities were managing the COVID-19 pandemic and its impact on their local school systems, economic climate, and health disparities. Other questions related to police reform, the 2020 summer uprising following George Floyd's death, voting accessibility and other concerns.

The mayoral dialogue was presented as a videotaped virtual event with live participation of two expert

# 2020 - 2021 Financial Statement

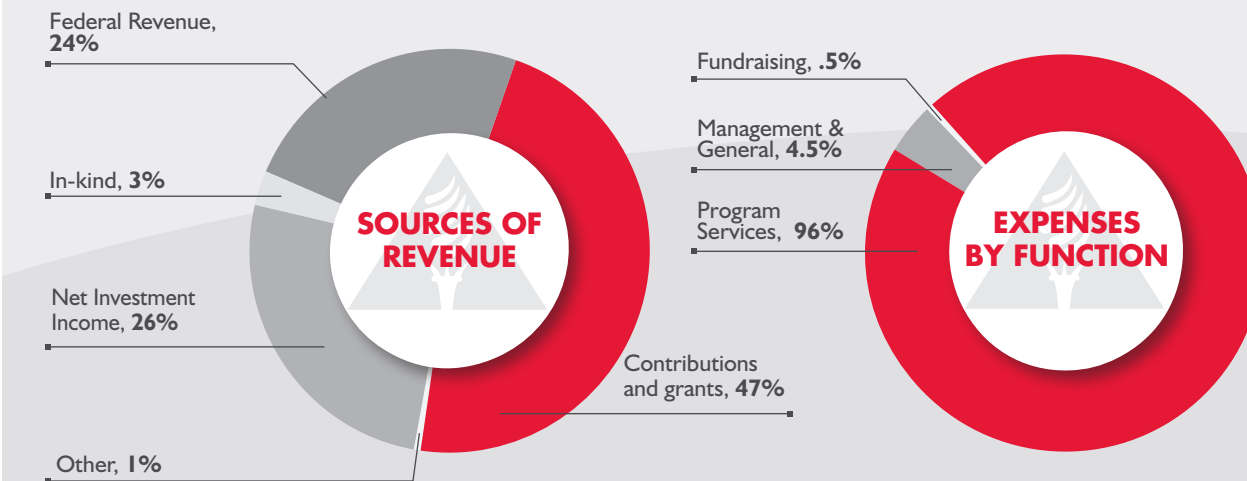
## ASSETS

Cash and Cash Equivalents	1,523,770
Investments	7,064,898
Fixed Assets	10,445
Other Assets	324,302
<b>Total Assets</b>	<b>\$8,923,415</b>
<b>Total Liabilities</b>	<b>\$184,602</b>

## NET ASSETS

Without Donor Restrictions	1,074,217
With Donor Restrictions	7,664,596
<b>Total</b>	<b>8,738,813</b>
<b>Total Liabilities &amp; Net Assets</b>	<b>\$8,923,415</b>

## STATEMENT OF ACTIVITIES



## **DREF Operations: Standing Firm**

### **Statement from Cheryl M. Thomas, CPA Interim Executive Director**

It has been a rewarding experience for me to return to DREF and perform an integral role in upholding its mission. As a Delta member and former Financial Consultant at DREF, I Stand Firm with the staff and board of directors to create possibilities and improve the lives of African American women and our families. Thus, I enthusiastically accepted the appointment as DREF Interim Executive Director in January of 2021.

It has been my responsibility to seek opportunities for strategic growth, manage the Foundation's daily operations, directing its financial performance and programs, and serving as a liaison to the board of directors. As the global pandemic continues the DREF staff remains in remote work status. Working remotely has proven to be efficient and effective, as we embrace technology and innovative measures to re-engineer our work processes. Some of the innovative techniques have included adopting electronic applications for processing business transactions, increasing use of videotaping, virtual engagement, and messaging. The use of videoconferences and our social media platforms (Facebook, Twitter, and Instagram) have been key in conducting our programs and for internal staff communications and DREF board engagement.

### **Charitable Engagement Service**

A major function of our daily operation is providing Charitable Engagement Service to Delta chapters. The service includes offering technical assistance with fundraising efforts of local chapters and the Sorority's Grand Chapter. The service ranges from managing scholarship funds, preparing grant submissions, reviewing sponsorship applications, and providing supporting documents. This year the staff presented a

series of webinars for Delta chapters on the Charitable Engagement Service.

### **Major Programs**

The DREF Research Matters for *All of Us* is a health initiative, funded by the National Institutes of Health that continued its fourth year of operation this year. As the Principal Investigator of DREF Research Matters, I assumed the leadership role in directing the initiative, which emphasizes the importance of understanding biomedical research and its importance in addressing many of the chronic illnesses that are prevalent in the African American community. The Delta Teacher Efficacy Campaign (DTEC) and Teachers Advocating to lead Great change (TAG) continued its seventh year of programming to realize teacher effectiveness and student achievement. The DTEC-TAG Equity Warriors continued its work in six geographic areas to advocate for policies included in the Every Student Succeed Act (ESSA). We are most appreciative of continued funding from the Bill and Melinda Gates Foundation to support DTEC-TAG.

The DREF Center for Research on African American Women continued its annual program endeavors that included presentation of the 2021 Stephanie Tubbs Jones Social Justice Forum at Delta Days in the Nation's Capital (Standing Firm with Our Sister Mayors) and the selection of the STJ Summer Intern.

### **Moving Forward**

As we approach DREF's 55th year, we are enthusiastically anticipating new opportunities to expand our programs and gain additional collaborative partners. The Foundation is Standing Firm and is positioned to advance its agenda in creating possibilities to empower the African American community. Thank you to our DREF constituents, collaborative partners, donors, and friends for supporting the charitable and educational programs presented by DREF.

## DREF Staff



**Cheryl M. Thomas, CPA**  
Interim Executive Director



**Deborah Peaks Coleman**  
Director of Programs



**Tashi M. Brown**  
Program Associate



**Ashley Daniels**  
Office Manager

## DREF Research Matters for All of Us



**LaShawn Cook**  
Donor Management and  
Financial Assistant



**Josephine Spurlock**  
Financial Consultant



**Regina Locust**  
Program Manager



**Kimiyo Williams, M.D.**  
Training and Volunteer  
Coordinator

## DTEC-TAG



**Marcia Johnson**  
Program Assistant



**Johni Cruse Craig, Ed.D.**  
National Project Director



**Princess Streeter**  
Program Assistant

Patricia W. Lattimore served as CEO  
until December 2020

Cynthia Wheeler served as Financial  
Consultant until May 2021

# 2020-2021 Donor Roll Call

## Unrestricted Donors

**Visionary Donor \$100,000 and Above**  
Delta Sigma Theta Sorority, Inc.

## Luminary \$10,000 - \$24,999

Anita Horne Jenkins  
The Benevity Community Impact Fund  
The Strada Educational Network

## Innovator \$5,000-\$9,999

Darylène S Harris  
Pat Hurlock  
Mary Lepley

## Change Agent \$2,500 - \$4,999

Doris Gray Brown  
Velina Dixon  
Patricia Evans  
Fourteen Karat Plus, Inc.  
Keenya Graham  
Michele V. Hagans  
Teresa Harman  
Renee L. Harper  
Vincent Harris  
Lisa Hudley  
Deborah Jones-Buggs  
Lora Mayo  
Vonetta Mickens  
Joan M. Prince  
Danielle Robinson  
Rian Williams  
Anjanette Wyatt

## Catalyst \$1,000-\$2,499

Eleanor Allen  
Adjoa B. Asamoah  
Ryan Barner  
Sabrina Barnes  
Leona M. Bridges  
Lavonnie Brinkley  
Gloria Brooks  
Johnnie Brooks-Booker  
Mary Brown  
Iris Bulls  
Michele Busby  
Vic Carew  
Alia Cole  
Johni Cruse Craig  
Shaunessye Curry  
Josie V. Daniels

Andrenetta Dennis  
Phoebe B. Dixon  
Charlene Dukes  
Kellie Duncan  
Margaree Cheek Fant  
Phyllicia E Fant  
Roietta Fulgham  
Shaune Gross  
Richard Hannon, Jr  
Michelle Heard  
Steven V. Hunter  
Cicely Ingram  
Barbara Jackson  
Lisa Jones  
Deborah A. Jones-Buggs  
Aldina Lee  
Carolyn E. Lewis  
Nigel W. Long  
Shanda McManus  
Yanique O. Moore  
Lavina Moss  
Patricia Myatt Davis  
Brenna Nance-Phillips  
Stephanie Nellons Paige  
Tracye Parker  
Suzanne Brown Peters  
Patricia Reed-Cunningham  
Louise A. Rice  
Xavier Richardson  
Tchicaya Robertson  
Constance Y. Ross  
Jamila Seaton  
Larry P. Suarez  
Carol Townsend Thompson  
Carolyn Turner  
Robin Vaughan  
Telia Virgin  
Anita White  
Olivia White  
Angela M. Williams  
Rian Williams  
Kenneth Wills  
Barbara Wilson  
Janice Winstead  
Anjanette Wyatt  
-

## Advocate \$500-\$999

Juanakee Adams  
Michelle Biggs  
Lois Elizabeth Bingham  
Marcia Bowden  
Carla Bozeman  
Yvonne Briley  
Linda Brown  
Phyllis Campbell  
Krysta Copeland

Mona Y. Davenport  
Alice Davis  
Erma Davis  
Lucretia Denson  
Linda DeYampert  
Vernetta Dickerson  
Chimille Dillard  
Suzanne Douglas  
Deborah Elam  
Debra Farrar-Dyke  
Renee Ford  
Michelle Graham-Freeman  
Gail Page Grange  
Antoinette Harper  
Florence Hervey  
Jamillah Hughes  
Adleane Hunter  
Bonnie James  
Sandra Johnson  
Cassie Levy  
Kendra L. Liddell  
Kimberly Lloyd  
Gwendolyn Morgan  
Deborah Payton-Jones  
Jacqueline Perry  
Mary Redd  
Gail B. Rogers  
Laureatte Scott  
Scott Simpson  
Barbara Smith  
Ovetta Smith  
Carol Stevens  
Cheryl M. Thomas  
Sherry Townsend  
Waynetta Turner  
Cheryl Turner  
Felicia Turnley  
Cheryl Vickers  
L. A. Webb  
Webb Solutions  
Sonya Whited  
Celeste Williams  
Gloria Williams  
Linda Wilson  
Arlene Wongus

## Collaborator \$250-\$499

Nena Abdul-Wakeel  
Shavon Arline-Bradley  
Susan Black  
Dolores Brinkley  
Wanda G. Brockington  
Sandra Brockington Gould  
Jeri Brooks  
Doris Brown  
Shirley Lewis-Brown

Sharon Barnett-Starks  
Alison Graves-Calhoun  
Stacey Callis  
Nancy Carpenter  
Pinkey Carter  
Josephine Chisom  
Sherre Collier  
Joy Calloway  
Deborah Peaks Coleman  
Elsie Cooke-Holmes  
Marvin Craig  
Denise Daniels  
Ashley C. Daniels  
Antoinette Dobson  
Edwena Durbar  
Zenita Fleming  
Zinga Fraser  
Hermione Graham  
Jacqueline Hill  
Cherie Hill  
Terri Jackson  
Judith Jenkins  
Althea Kitchens  
Kathleen Kizziee  
Karen Little  
Tonya Lowe  
Qiana McNary  
Nikki Miller  
Elaine Mitchum  
Felicia Moore  
Maryann Perry  
Dionne Polite  
Diane Ridley  
Lynn Rose  
Jacqueline Smith  
Cheryl Spain  
Gail Spann-Greer  
Karen Stanley  
Patricia Stevens  
Jeffrey & Nicole Tate  
Tiffany Thomas  
Annie Whatley  
Gwen Williams  
Kimiyo Williams

## Unrestricted Chapters

**Catalyst \$1,000-\$2,499**  
Federal City Alumnae  
Wilmington (DE) Alumnae

## Advocate \$500-\$999

Broward County (FL) Alumnae  
Memphis Alumnae  
Mississippi Gulf Coast Alumnae  
Nassau Alumnae

New Orleans Alumnae  
Port Arthur (TX) Alumnae  
Richmond (VA) Alumnae  
Suburban Houston-Fort Bend Alumnae  
Vicksburg (MS) Alumnae  
Youngstown (OH) Alumnae

## Collaborator \$250-\$499

Americus (GA) Alumnae  
East Point College Park (GA) Alumnae  
Ft. Washington (MD) Alumnae  
Greater Toronto Area Alumnae  
New Bern (NC) Alumnae  
Norfolk (VA) Alumnae  
North Jersey Alumnae  
Orlando Alumnae  
Petersburg (VA) Alumnae  
Prince George's County (MD) Alumnae  
Queens (NY) Alumnae  
Sumter (SC) Alumnae  
Tuscaloosa (AL) Alumnae

## Combined Federal Campaign (CFC) and Workplace Giving

Catherine L. Abrams  
Aetna Foundation, Inc.  
The Allstate Foundation  
Celeste Allen  
Booz Allen  
Deborah A. Allen Robinson  
Allstate  
Allstate Giving Campaign  
Jasmine N. Alston  
Karen Ambeau  
America's Best Local Charities CCSF  
America's Charities  
Ameriprise Financial  
Dana K. Anderson  
Rhonda Andrew  
Elizabeth L. Andrews  
Raytheon Technologies  
Cheryl W. Appline  
UHG  
Aramark  
Cherimonda Arrington  
Cynthia Ashby  
Miranda Askew-Brown  
AT&T Employee Giving Campaign  
Keisha Atwood  
Veronica Avery  
Arthur Axelson  
Barbara L. Bagneris  
Tunya L. Bails  
Dorothy J. Baker  
The Bank of America Charitable Foundation



Bank of America Employee Giving Campaign	Mary L. Coleman	Environmental Federation of NC	Janelle Hill	Cheryl Long
The Bank of New York Mellon Community Partnerships	Beth Coleman-Oliver	Diane Epps	Joyce Hobson	Janice Love
Kathy Banks	Waetina A. Coles	Lorie A. Evans	Laverne Holland	Regina M. Lurry
Leyonna M. Barba	Vickie A Collette	Latisha Falana	Elise Holmes	Tauriana Lyles King
Monique Brown	Shette Collier	Gloria Farris	Honeywell International Charity Matching	William Makell
Belinda R. Barksdale	Kathleen Collins	Chandra R. Felton	Cicely Hooten	Mikal Malik
Sharon D. Beard	Tiffany Comeaux	Fidelity Charitable Gift Fund	Monica A. Hopson	Antoinette Mann
Schean G Belton	Community Health Charities	Whitnee C. Fields	Keyrunta L. Houston	Beverly Ann Marshall
The Benevity Community Impact Fund	Community Shares of Colorado	Tanjanika Fishburne	Leslie Howard	Tianna J. Martin
Deborah L. Bernal	Jolene Cook	Julie Fitzpatrick	Cheryl Hudson	Irma J. Mason
Sharon Y. Black	Dana Cooper	Aneesah Flagg	Julie Hurd	Nicole Matthews
April Quarles Blair	Pheloundashea Copeland	Marquel Forbes	Huron Consulting Group, Inc.	Patricia M. Mayberry
Patricia W. Blue	Matthew Coughlin	Jennifer R. Franks	Latasha Hutson	Trevy A. McDonald
Boeing Company Employee Individual Giving Program	Joanne J Courtney	Kyra Frazier	IBM Employee Services Center	McGraw Hill Financial
Johnnie Brooks Booker	Donna Crews	Jade A. Fulce	Deborah D. Ingram	Michelle McGriff
Tia Bostick	Rhonda Cross	Glenda Gabriel	Intel Foundation	Launell McGuine
Yulanda Bowman	Lisa Crutchfield-Diggs	Genee Gaither	Jalence Isles	Courtnie McIntosh
Kathy Bowman-Williams	Qiana Cryer-Coupet	Johnnie C. Gales	Mina Issa	Kanika McKerson
Carla Bozeman	CSAA Insurance Group	Kitara Garner	Julie Simmons Ivy	Toni McLauren
BP Fabric of America Fund	CSX Transportation, Inc.	Crystal Gathers	Connie Jackson	Alaina R. McMurtry
Arlease S. Brady	Shantel K. Culver	The GE Foundation	Helen Jacobs	Deborah D. McNeil
Maxine Brandon	Terry A. Cummings	GE United Way Campaign	JC Penney Change for the Better Campaign	Felicia McPhail
Andria Bray	Morgana Cunningham	Arnette Georges	Catina L. Jeffrey	Tamika McPherson
Jina M. Braynon	Jade Dabney	Geraldine R. Dodge Foundation	Andria M. Jeffries	Ethel D. Means
Donna Bridges-Smith	Michael Daly	Pia Gero	Sheila Jenkins	Lori Medina
Bristol-Myers Squibb Company	Anthem	Gisele Goff	Kim E. Jennings	City of Orlando
Bristol-Myers Squibb Foundation	Phyllis C Davis	Valtressia Givens	Abbott Laboratories - EGC	The Merck Foundation
Shelisa Brooks	Gladys Deloney	GivePlus Program	Amaris Johnson	Meredith Corporation Foundation
Charisse Brossard	Denise Robinson	Jacqueline Glanville	Johnson & Johnson	Wanda Michals
Andrea M. Brown	LaToya Dixon	Maryann L. Glass	Tina Jolivet	Microsoft Matching Gifts Program
Crystal Brown	Antoinette Mann Dobson	GlaxoSmithKline Foundation	Cecily Jones	Jennifer Miles
Sheila Bryant	Terry F. Dodson	Dionne C. Godette	Loralean Jordan	Alisa Miliner
Jelessa Burney	Dominion Energy	Goldman Sachs Matching Gift Program	JP Morgan Chase	Melissa Miller
Anita Bryant Burrell	Carolyn Donaldson	Tiffany Joseph Goodson	Macy's	Cassandra Miller-Hardwick
Deanna Burton	Donate Well	Christine S. Grant	A.K. Kennedy	Lucinda Mills
Veleria Bush	Angela Dorsey	Alison Graves-Calhoun	Angela Perry-Hendrix	Regina Milteer-Rock
Pamela Butler	Danielle Douglas	Darrian Gray	Kevin Korsh	Nicole Terry
California Community Foundation	Brittany Dowdy	Luciana Gray	KPMG Community Giving Campaign	Anita Montgomery
Shela Cameron	Katrina Powell Druery	Darrian Gray	Adzoa Kwawu	Terra Moody
Patricia J Caputo	Marquetta Duke	Felecia V. Green	Stephen Kwong	Monica R. Moore
Angela Carr	Duke Corporate Accounts Payable	Ruby Griffin	Brenda Lambert	Margaret A. Moore-Jackson
Emily Carroll	Duke Energy Florida, LLC	Linnet P. Griffiths	Yolanda Lauderdale	Alisa Moore-Woods
Microsoft	Allison Dulaney	Elizabeth L. Gunn	Toni T. McLauren	Rebecca Morgan
Charities Aid Foundation of America	Edwena Dunbar	Leslie Hagans	Goline Lawrence	Morgan Stanley CyberGrants, Inc
Kendra Chilsom	Dusty Downs	Kimberly Hamilton	Jeanette D Lawson	Bobbie Morrow
Josephine Chisom	Eastern Bank	Andrea M. Harper	Monica T. Leach	Annetta Moses
Carolyn Clark	Educational Testing Service	Crystal Harris	Ann-Marie Lee	Carol Ann Moses
Sharri Clark	Batisa S. Edwards	Zackulyn H. Hart	Angel Lessanu	Cryserica Jeter
Germel Clarke	Elaine L. Clemens	Ericka Davis Haynes	Michael Levin	June Moss
Andrea Clerk	Deborah A. Elam	HCA Caring for the Community	Erica Lewis	Joelle Hayes Murchison
The Coca-Cola Foundation Matching Gifts Program	Elease Fogle Smith	HCA Foundation	License Plates of Texas	Renata Murray
Courtney Cola	Felicia Ellison	Heart of Florida United Way, Inc	Kendra L. Liddell	National Society Daughters of the American Revolution
Rosalyn Cole	The Elsevier Foundation	Chrystal D. Henderson	Ora Linen	Nationwide Foundation CyberGrants Workplace Giving Program
	Elsie B. Crowell	Lisa Herbert	Lisa Jenkins	Stephanie Nellons Paige
	Enterprise Rent-A-Car Company of Rhode Island, LLC	Rosemary Smith Hickman	Athena C. Lock	
		Kelsey Hicks	Dmitra Lofton	

Tina Nelson  
Marietta D. Newman  
Colette T. Nichols  
Kimberly Davis  
Alice Nodine  
Jennifer Norman  
Valeria Obi  
May C. Offutt  
Angela A. Owens  
Jyoti Pai  
Sheila C. Parker  
Shandra Parks  
Frances Parrott  
Diandra Lynn Patterson  
Avis H. Payne  
Gwendolyn C. Pearson  
Ayoka Perkins-Knox  
Robert Perry  
Adrian Peterson-Fields  
Pfizer Foundation Volunteer Program  
PG&E Corporation Campaign  
PG&E Corporation Foundation  
Sheldon Pine  
Pledging Foundation  
Zaneta R. Ponton  
Darleen M. Pope  
Melinda Pope  
DeLois Porter  
Cynthia Portis  
Tonia Powell  
Apriel Powell Martin  
Princess Powell-McEvelley  
Kimberly A. Pratt  
Joan M. Prince  
Progressive Casualty Insurance Foundation  
Progressive Casualty Insurance Company  
Kimberly E. Purifoy  
Yusuf Rahman  
Antonya P. Rakestraw  
Saranna T. Rankin  
Gail Ray  
Razoo Foundation  
Kellyta Reives  
Serena Reshard  
Annie Rice  
Karlotta Richards  
Cheryl Richardson  
Shamese Richburg  
Diane M. Ridley-White  
Anna Riley  
Simone Rixey  
Sharlene Roberson  
Adriene Roberts  
Karen N. Roberts  
Rhonda Robertson  
Selena Gilliam Robinson

Charisse Rodgers  
Tracey Rogers  
Dionne Rogers  
Debra A. Ross  
Vicki S. Royal  
Elisa Rae Rucker  
Laqueta Rumley  
Elise Sadler-Williams  
Sam Mozelle  
Henry Sanders  
Marvia Sawyer  
Karen M. Scarlett-Adams  
Mauri Schoby  
Beverly Schulerbrandt  
Frejeanne R. Scott  
Minnette Scruggs  
Shani Waugh  
Kamili Shaw  
Shell Employee Giving Program  
Shell Oil Company Foundation Matching  
Gifts  
Jade Shepherd-Dabney  
Tracy Sheppard  
Reginald Sherman  
Bettina C Shuford  
Kelli Sibert  
Silicon Valley Community Foundation  
Nekeshia G Simmons  
Yvonne Sims  
Constance P. Smith  
Alicia Smith-Freshwater  
Erma Jean Smith-King  
Chelsea Smith-Standberry  
Judy Smylie  
Natsha Snell  
Letita Snyder  
Yolanda Speed  
Stacey Bryant  
Veda S. Stanley  
State Farm Companies Foundation  
State Farm Mutual Automobile Insurance  
Company  
Angela Billings  
Erica R. Stephens  
Trina Stewart  
Sharon R Stokes  
Takesha Stokes-Dorsey  
Rolanda Stone  
Strada Educational Network  
Barbara Suplita  
Kasie Swayne  
Maria Swift  
Synchrony Corporate Citizenship  
T. Rowe Price Foundation  
Velveeta Tanksley  
Tracey L. Tanner

Rosalyn Tate  
Dia M. Taylor  
Estee Lauder Companies  
Sheryl Tolbert-Johnson  
Toyota  
Travelers Community Connections  
Travelers Property Casualty  
TRUIST  
Hope Murphy Tyehimba  
U.S. Bank Foundation  
Union Pacific Fund for Effective Government  
United Health Foundation  
United Health Group/Employee Giving  
Campaign  
United Illuminating Company  
United Student Aid Funds  
United Way California Capital Region  
United Way of Amarillo & Canyon  
United Way of the Bay Area  
United Way of the Bluegrass  
United Way of Brazoria County  
United Way of Brevard  
United Way of Central & Northeastern  
Connecticut  
United Way of Central Carolinas  
United Way of Central New Mexico  
United Way of Coastal Fairfield County  
United Way of Greater Houston  
United Way of Greater Philadelphia & SNJ  
United Way of Greater Richmond &  
Petersburg  
United Way of Greenville County, Inc.  
United Way of King County  
United Way of Metropolitan Dallas, Inc.  
United Way of Midland County  
United Way of Monmouth County  
United Way of Monterey County  
United Way of the National Capital Area  
United Way of North Central Florida  
United Way of Putnam County  
United Way of Rhode Island  
United Way of San Diego  
United Way of South Hampton Roads  
United Way of Southeastern Pennsylvania  
United Way of Tampa Bay  
United Way of the Virginia Peninsula  
United Way of York County  
Sandra Vandiver  
Jessie Varnado  
Gladys G. Vaughn  
Verizon Foundation  
Ashley F. Wade  
Antionette D. Waits  
Linda T. Walker  
Dennis Wall  
Walmart

Carol Wambeke  
Denice Clark Ware  
Melinda Washington  
Demetria L. Webster  
Sheree L. Welch  
Wells Fargo Community Support Campaign  
Daina White  
Whitney White  
Deborah Wilburn  
Lyla Wilkins  
Andretta Williams  
Tamia Willis  
Danna Wilson  
Geraldine Woodberry-Wright  
Marica Woodham  
Daphne C. Wright  
Renee Colleen Yancy  
Mitzi Young  
YourCause Corporate Employee Giving  
Programs  
YourCause LLC Trustee for Medtronic  
Foundation Volunteer Grant Program  
You Cause, LLC  
YourCause, LLC Trustee for the HCA  
Foundaion  
YourCause, LLC for Hewlett-Packard  
YourCause, LLC for JC Penney  
YourCause, LLC or PWC LLP  
YourCause, LLC Trustee  
YourCause, LLC Trustee for AbbVie  
Employment Engagement Fund  
YourCause, LLC Trustee for Accenture LLP  
YourCause, LLC Trustee for Boeing  
YourCause, LLC Trustee for Duke Energy  
Foundation  
YourCause, LLC Trustee for ESTS Cares  
Employee Donations  
UnitedHealth Group/Employee Giving  
Campaign

### THANK YOU FOR YOUR SUPPORT!

Every effort has been made to ensure the accuracy of our Donor Roll. If your name has been misspelled or omitted or if your donation has been omitted or misrepresented, please accept our sincere apology. Kindly let us know the correction needed by sending an email to [info@deltafoundation.net](mailto:info@deltafoundation.net). We will correct our records using the information that you provide. Thank you very much for your charitable donation to DREF.





CREATING POSSIBILITIES ...  
IMPROVING LIVES

1703 New Hampshire Avenue, NW  
Washington, DC 20009

T 202.347.1337

[www.deltafoundation.net](http://www.deltafoundation.net)

[info@deltafoundation.net](mailto:info@deltafoundation.net)

 [facebook.com/DREFPage](https://facebook.com/DREFPage)

 [twitter.com/DREF\\_1967](https://twitter.com/DREF_1967)

 [instagram.com/DREF\\_1967](https://instagram.com/DREF_1967)

 [www.linkedin.com/company/delta-research-and-educational-foundation/](https://www.linkedin.com/company/delta-research-and-educational-foundation/)

## IN APPRECIATION

The DREF Board of Directors extends immense gratitude to Delta Sigma Theta Sorority, Inc. National President Beverly E. Smith, the National Executive Board, and the DST National Headquarters Staff. Sincere appreciation is also offered to all of our donors, volunteers, collaborative partners, and the DREF Staff.